

Tarp System Spec Book:

TarpMaster[®] and DT Series

...for Single Axle to
Multi-Axle Dump Trucks



Roll-Rite[®]
...Clearly the Best.

Electric Tarp Systems

www.RollRite.com

John Dsuban Spring Service Inc.
Cincinnati, Ohio
(877) 537-8226

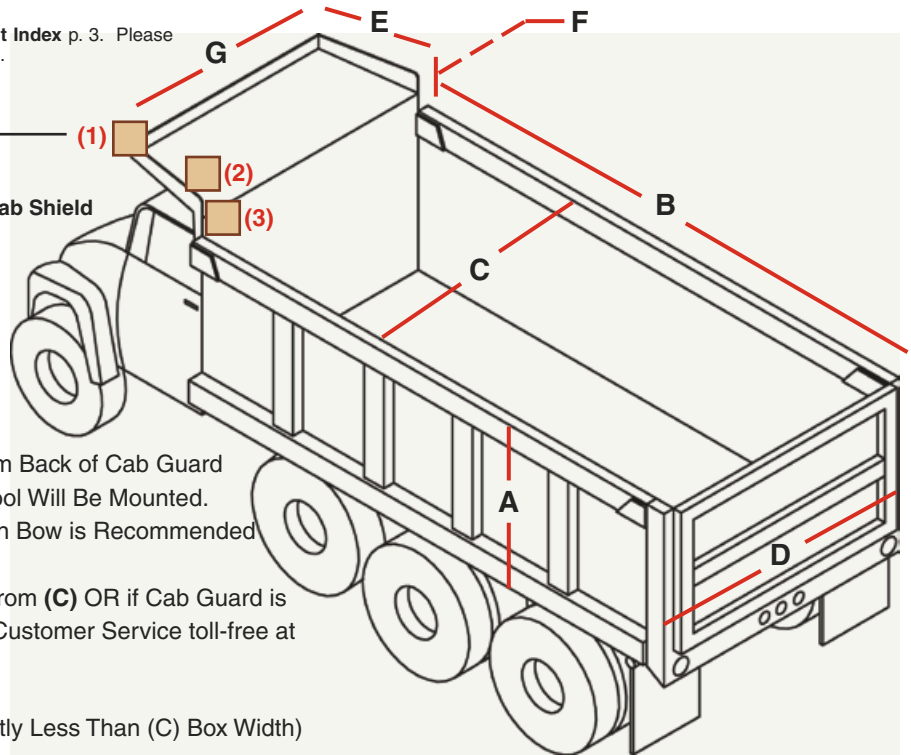
Easy Spec & Order Sheet

Please use inches for unit measurement.
Part numbers start on page numbers shown in the **Component Index** p. 3. Please read each Component section for important **Fit Considerations**.

Spool Position:

Check One Box To Show Mounted Spool Position :

- (1) Front of Cab Shield
- (2) Rear Positioned on Top of Cab Shield
- (3) Forward Positioned on Box Top/Behind Cab Shield



Box: _____ " (A) Height
 _____ " (B) Length
 _____ " (C) Width (inside)
 _____ " (D) Outside Width of Widest Point
 —If Tailgate is Over 100"

Cab Shield: _____ " (E) Length —OR— Distance From Back of Cab Guard to Where Spool Will Be Mounted.
 _____ " (F) Rise: —If 8" or More, Tension Bow is Recommended
 _____ " (G) Front Width
 **If Width Varies Considerably from (C) OR if Cab Guard is Tapered, Please Call Roll-Rite Customer Service toll-free at 1-800-297-9905

Tarp Size: _____ " Width (Generally Should Be Slightly Less Than (C) Box Width)

(Required*) _____ " Length = _____ + _____ + _____ + 24" (2 feet)
 (B) (E) (F)

Pivot Springs: **Determining Spring Capacity:**
 Above tarp length calculation and your tarp material determines the number of springs your system requires.

| General Aggregate (Mesh) Tarp Applications | | | | | | | | |
|--|------|------|----------|------|------|----------|------|------|
| 10ft | 12ft | 14ft | 16ft | 18ft | 20ft | 22ft | 24ft | 26ft |
| 3-Spring | | | 4-Spring | | | 5-Spring | | |

| Asphalt (Solid) Tarp Applications | | | | | | | | |
|-----------------------------------|------|------|------|----------|------|------|------|------|
| 10ft | 12ft | 14ft | 16ft | 18ft | 20ft | 22ft | 24ft | 26ft |
| 4-Spring | | | | 5-Spring | | | | |

Please Note:
 All Solid Tarp Fabrics Should Be Tied Down.

Selected System:

Part # _____ **1. Selected Tarp Spool: see p. 5**

Part # _____ **2. Selected Pivot Set: see p. 6**

Part # _____ **3. Selected Bow Set: see p. 7**

Part # _____ **4. Roll-Rite® Tarp Selection: see p. 10-11** (specify by part number)
 To ensure accuracy, orders for custom tarps must be accompanied by an approved drawing.

Add-Ons:

Options/Recommendations:

Part # _____ Tension Bow (p. 7) Part # _____ 30° or 45° Tarp Bow Offsets (p. 7) Part # _____ 45° Pivot Offset Kit (p. 6)

OR:

Roll-Rite® Quick-Pick Tarp Systems:

Check on p. 8-9 to see if a Quick Pick Tarp System will meet your application needs.

Quick Pick# _____ **A. Roll-Rite® Quick-Pick Tarp System** (see p. 8-9)

Part # _____ **B. Roll-Rite® Tarp Selection** (specify by part number)
 To ensure accuracy, orders for custom tarps (flapped, etc.) must be accompanied by an approved drawing.

Roll-Rite® — Clearly the Best.

1-800-297-9905

John Dsuban Spring Service Inc.
 Cincinnati, Ohio
 (877) 537-8226

When form is complete, Fax along with Name, Address, email and Phone number to (513) 860-1213

How To Specify:

Specifying a Complete Roll-Rite® Tarp System

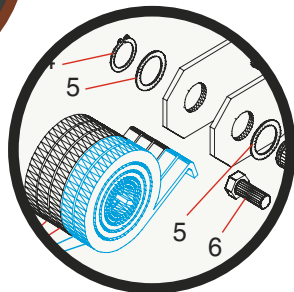
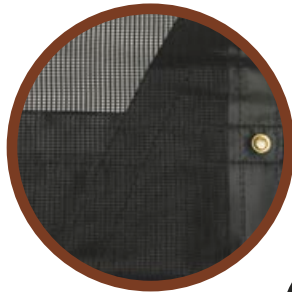
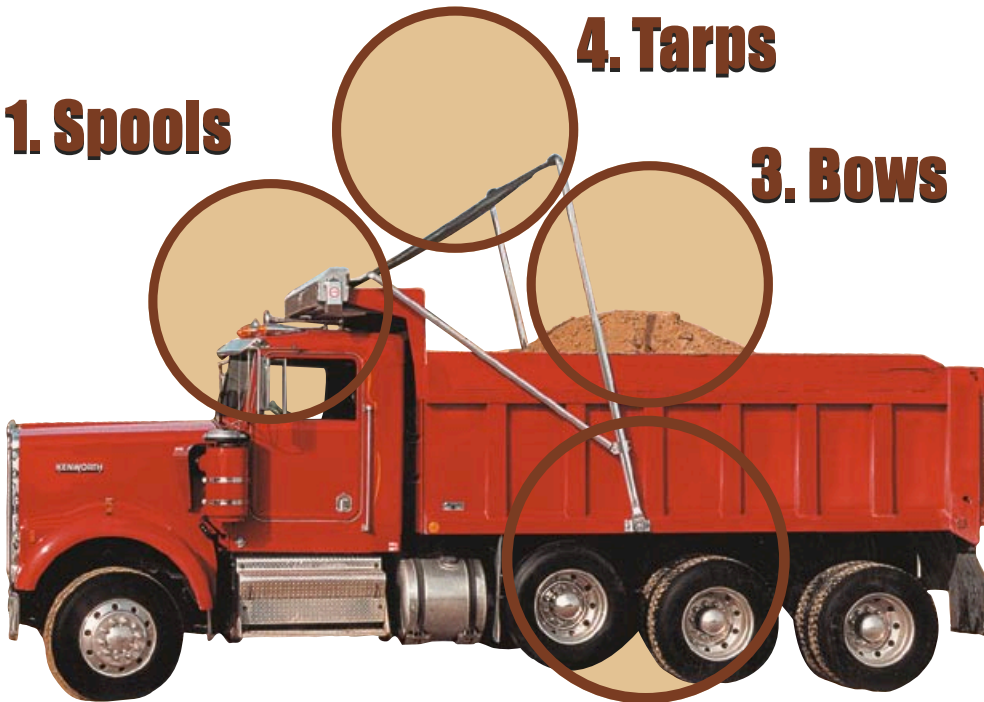
A complete Roll-Rite® Front-to-Back Tarp System consists of **four** main system components as shown below. The following pages listed in the index below give important fit considerations and recommendations in selecting the system components that will best meet the needs of your truck and application. Choosing the right system components is the best way to get maximum performance from your tarp system.

1. Spools

4. Tarps

3. Bows

2. Pivots



Tarp Spools.....p. 4-5

Pivot Arms p. 6

The 45° Pivot Arm Offset..... p. 6

Bows, Offsets & Tension Bow.....p. 7

Quick-Pick Systems.....p. 8-9

Tarps p. 10-11

Parts & Diagramsp.12-15

Tarp Spool Diagram p. 12

Pivot Set Diagram.....p. 13

Bow Set Diagrams.....p. 14-15

Roll-Rite® — Clearly the Best.
1-800-297-9905

The Electric Tarp Spool Kit

Inside a Tarp Spool Kit:

All Tarp Spools Include:

- Choice of TarpMaster® or Super Duty Tarp Motor
- A Pre-Threaded Tarp Axle w/Stub Shaft
- A 10900 Heavy Duty Electric Kit with Open/Close Rocker Switch/Cover
- 60 feet of 6-gauge Dual Conductor Wire
- 15 feet of 14-gauge 3-Conductor Wire
- Necessary Mounting Hardware (varies by spool style, see facing page)



TarpMaster® & Super Duty Tarp Motors:

All tarp motors by Roll-Rite® are specifically engineered for tarping and feature:

- **Corrosion Resistance...** Protective casings and covers are designed to be **virtually corrosion proof!**
- **High Polished...** Chrome-plated casing adds distinct impact to your truck profile for a professional, attractive appearance.

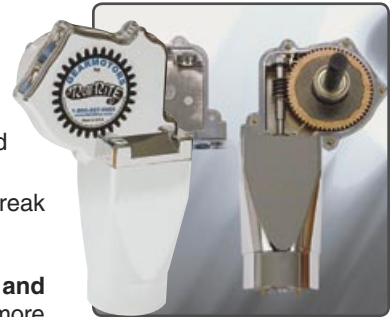
The TarpMaster® is today's industry standard for general purpose tarping and is designed to power systems using up to 24 feet of tarp.

- **Tougher...3 times** more crash protection and requires **7.4 times** more force to break than its torque output.

The patented Super Duty has the power needed to tarp bigger dump trucks. Its **spur and helical gearing**, with hardened steel gears and precision ground ball bearings, provides more efficient power transfer, for a much longer transmission life than any worm-style transmission. It's high-polished chrome-plated gearbox adds distinct impact to your truck's profile. It's motor also comes with a chrome-plated cover, designed to be virtually corrosion-proof.

- **Tarp Industry's Leading Gear Motor**
- **Engineered for High Torque Demands**
- **Unique Performance...** Unlike any competitive tarp motor, the Super Duty can reach peak performance because it requires only **half the amp draw** of any other tarp motor.

The Industry's Best NON-Prorated Gear Motor Warranty... Roll-Rite warrants all gear motors against premature wear out. The TarpMaster® is warranted for a period of 3-years from date of shipment and the Super Duty gear motor is warranted for a period of 5-years from date of shipment. That means if the TarpMaster® fails in its 3rd year or the Super Duty in its 5th year due to warrantable wearout, you don't get a partial credit towards a new motor—you get a **completely new motor**, period.



10900 Heavy Duty Electric Kit:

Fit Considerations

- In-cab electric switch operation for easy operation
- Quick and easy installation into existing truck control panel or mounting on tower control console
- Kit comes complete with open/close momentary rocker switch w/ mounting bracket, motor reversing relay w/cover, 30 amp automatic reset circuit breaker along with required terminal connectors and fasteners



For Electric Parts List & Wiring Diagram, See p. 16

Shown:
Control Console Installation
of Open/Close Momentary
Rocker Switch

Roll-Rite®— Clearly the Best.

1-800-297-9905

John Dsuban Spring Service Inc.

Cincinnati, Ohio

(877) 537-8226

Selecting a Tarp Spool

TarpMaster® & Super Duty Tarp Spools:

w/ Housing



Part # Description

| | |
|-------|--|
| 36010 | TarpMaster® Tarp Spool w/ 92" Housing |
| 36060 | TarpMaster® Tarp Spool w/ 98" Housing |
| 36110 | TarpMaster® Tarp Spool w/ 104" Housing |
| 36020 | Super Duty Tarp Spool w/92" Housing |
| 36070 | Super Duty Tarp Spool w/ 98" Housing |
| 36120 | Super Duty Tarp Spool w/ 104" Housing |

Fit Considerations

- Housing Surrounds Tarp for Ultimate Wind & Tarp Protection
- Places Tarp And Bows Furthest Away From "Load Zone"
- Completely Pre-assembled with Gear Motor
- Available in 92", 98", and 104" sizes

w/ Wind Deflector



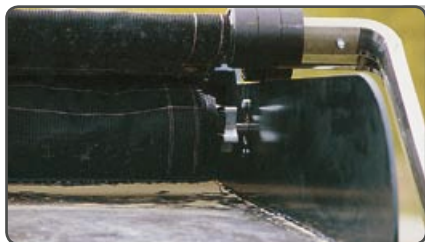
Part # Description

| | |
|-------|---|
| 36460 | TarpMaster® 97" Tarp Spool w/ Wind Deflector |
| 36480 | TarpMaster® 103" Tarp Spool w/ Wind Deflector |
| 36470 | Super Duty 97" Tarp Spool w/ Wind Deflector |
| 36490 | Super Duty 103" Tarp Spool w/ Wind Deflector |

Fit Considerations

- A Very Cost Effective Way To Get Frontal Wind And Tarp Protection
- Light Weight And Custom Fitted Install
- Requires Aluminum Cutting & Gear Motor Assembly
- Available in 97" and 103" sizes

Tarp Spool Only

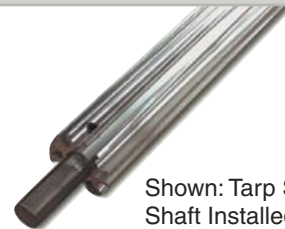


Part # Description

| | |
|-------|-----------------------------|
| 36370 | TarpMaster® 97" Tarp Spool |
| 36390 | TarpMaster® 103" Tarp Spool |
| 36380 | Super Duty 97" Tarp Spool |
| 36400 | Super Duty 103" Tarp Spool |

Fit Considerations

- Cost Effective Conversion For Existing Hand Crank Systems
- Integrates Into Cab Shield For Less Visible Install
- Requires Gear Motor Assembly
- Available in 97" and 103" sizes



Shown: Tarp Spool with Stub Shaft Installed.

For Tarp Spool Part Diagrams, See p. 12-13

Roll-Rite® — Clearly the Best.

1-800-297-9905

Pivot Arms

Pivot Arms:



Roll-Rite® Tarp Arms: The Bow & Pivot Arm

Each arm is comprised of a specially treated, high strength extruded aluminum alloy. Our 4-spring and 5-spring External Pivot Sets come standard with 84" pivot arms.

- **Strongest Arms...** Patented arm design and special extrusion delivers the lightest, most durable tarp arm with the best strength to weight ratio
- **Telescopic Fit...** Allows for easy installation and widest range of system variations
- **High Polished...** Each arm is buffed and polished to a mirror-like finish
- **Manufactured in America**

External Mount with Pivot Arms:

Fit Considerations

- Quick and Easy Installation
- Pre-Assembled with 84" Passenger Side and Driver Side Pivots Arms
- Available in 3, 4 or 5 Spring Capacity
- 3-Springs are recommended for up to 16 feet of tarp
- 4-Springs are recommended for up to 20 feet of tarp
- 5-Springs are recommended for up to 26 feet of tarp



Part # Description

| | |
|-------|--|
| 46430 | External 3-Spring Pivot Set w/84" Pivot Arms |
| 46440 | External 4-Spring Pivot Set w/84" Pivot Arms |
| 46450 | External 5-Spring Pivot Set w/84" Pivot Arms |

For Pivot Set Part Diagrams, See p. 14

Pivot Arm Offset:

45° Pivot Arm Offset Kit:

Use even more of the toughest tarp pivot arm in the industry! Our new 45° Pivot Elbow Kit now gives you the option to extend our bigger pivot tube up the full length of your application for a custom tailored fit.

- Angle Pivot Arm to avoid load zone area or to clear cab doors
- Kit Includes 2-2' pivot tube extensions, 2-45° pivot elbows and 4 set screws



Part # Description

| | |
|-------|---------------------|
| 76916 | 45° Pivot Elbow Kit |
|-------|---------------------|

Roll-Rite® — Clearly the Best.

1-800-297-9905

John Dsuban Spring Service Inc.
Cincinnati, Ohio
(877) 537-8226

Items listed as each unless otherwise indicated.

Tarp Bows & Tension Bows

Tarp Bows:

Fit Considerations

- If Your Truck Cab Guard is Over 8" Tall, Roll-Rite® Recommends adding the Tension Bow Option Below
- If You Need to Clear a Tailgate of Over 100" at the Widest Point use the Wide Bow Set (76720)
- Adjustable for a customized tarp system fit



Part # Description

76700 Standard Tarp Bow Set (Includes 2- 76764 and 1- 76770)

76720 Wide Tarp Bow Set (Includes 2- 76764 and 1- 76870)

Tension Bows:

Fit Considerations

- Recommended for Securing Tarp Behind Cab Guards Measuring Over 8" Tall
- 30° and 45° Tarp Bow Offsets Can Be Used for Customized Fit (see Bow Offsets below)
- Use The Long Tension Bow If Truck Bed Is Over 18'
- Use The Wide Tension Bow To Clear Tailgate Over 100" At Widest Point



Part # Description

76710 Standard Tension Bow Set (Includes 2- 76780 and 1- 76790)

76730 Wide Tension Bow Set (Includes 2- 76780 and 1- 76890)

76840 Long Tension Bow Set (Includes 2- 76880 and 1- 76790)

76850 Long & Wide Tension Bow Set (Includes 2- 76880 and 1- 76890)

For All Bow Set Part Diagrams, See p. 14-15

Bow Offsets:

Standard Bow Offset Benefits:

- Angle tarp and tension bows to avoid load zone area or to clear cab doors
- Adjustability for a customized tarp system fit
- Available in 30° or 45° Elbow Angles
- Can be installed with both Tarp Bows and Tension Bows



Standard Offset Tarp & Tension Bow

Part # Description

76900 30° Flat Bow Elbow (Each)

76910 45° Flat Bow Elbow (Each)

76910



76900



Items are listed as each unless otherwise indicated.

John Dsuban Spring Service Inc.
Cincinnati, Ohio
(877) 537-8226

Roll-Rite® — Clearly the Best.
1-800-297-9905

Quick-Pick Tarp Systems

Quick-Picks!

All you need is your Calculated Tarp Length from the Easy Spec & Order Sheet (inside cover). Tarps sold separately. Unless otherwise indicated Quick-Pick systems include:

- A TarpMaster® or Super Duty 97" Tarp Spool w/ Wind Deflector
- 3-, 4- or 5-Spring External Mount Pivot Set
- 76700 Standard Tarp Bow
- Flat 30° or 45° Elbow Offsets are **FREE** upon request



Free* Bow Offsets!

*Must specify at time of system order.



TarpMaster® Series: for use with up to 16'-24' of Tarp as indicated

Shown With Tension Bow sold separately.

Single Axle w/ Wind Deflector:

| Part # | Description |
|--------|---|
| 63070 | TarpMaster® 3-Spring Wind Deflector Tarp System for up to 16' of Tarp |



Single Axle w/ Tarp Spool Only: (for Built-Ins)

| Part # | Description |
|--------|--|
| 63071 | TarpMaster® 3-Spring Tarp Spool Only Tarp System for up to 16' of Tarp |

Shown with Tension Bow sold separately and (4) 30° Flat Elbow Offsets.



Tandem:

| Part # | Description |
|--------|--|
| 64170 | TarpMaster® 4-Spring Tarp System for up to 20' of Tarp |



Tandem w/ Tension Bow:

| Part # | Description |
|--------|--|
| 64171 | TarpMaster® 4-Spring Tarp System w/Tension Bow for up to 20' of Tarp |

64171 System Also Includes:

- 76710 Standard Tension Bow Set



Multi-Axle:

| Part # | Description |
|--------|--|
| 65712 | TarpMaster® 5-Spring Tarp System for up to 24' of Tarp |



Roll-Rite® — Clearly the Best.

1-800-297-9905

John Dsuban Spring Service Inc.
Cincinnati, Ohio
(877) 537-8226

Items listed as each unless otherwise indicated.

Quick-Pick Tarp Systems

DT Series (Super Duty) for Multi-Axles

Multi-Axle Straight Pivot Arm:

Part # Description
65710 Super Duty 5-Spring Tarp System



Multi-Axle w/ 45° Pivot Arm Offset:

Part # Description
65715 Super Duty 5-Spring Tarp System w/ 45° Pivot Offset

- 65715 System Includes:**
- 76702 Short Tarp Bow Set (instead of Std. Tarp Bow)



Multi-Axle w/ Tarp & Tension Bow:

Part # Description
65713 Super Duty 5-Spring Tarp System w/Tension Bow

- 65713 System Also Includes:**
- 76710 Standard Tension Bow Set



Recommended Stock Tarps:

See the following pages for additional tarps & custom order specifications.

PREMIUM MESH

| Tarp Length | 84" W | 88" W |
|-------------|-------|-------|
| 12' | 81120 | 81121 |
| 14' | 81140 | 81141 |
| 16' | 81160 | 81161 |
| 18' | 81180 | 81181 |
| 20' | 81200 | 81201 |
| 22' | 81220 | 81221 |
| 24' | 81240 | 81241 |
| 26' | 81260 | 81261 |

HEAVY DUTY ASPHALT

| Tarp Length | 84" W | 88" W |
|-------------|-------|-------|
| 12' | 83120 | 83121 |
| 14' | 83140 | 83141 |
| 16' | 83160 | 83161 |
| 18' | 83180 | 83181 |
| 20' | 83200 | 83201 |
| 22' | 83220 | 83221 |
| 24' | 83240 | 83241 |
| 26' | 83260 | 83261 |

Items are listed as each unless otherwise indicated.

John Dsuban Spring Service Inc.
Cincinnati, Ohio
(877) 537-8226

Roll-Rite® — Clearly the Best.
1-800-297-9905

Roll-Rite® Premium Tarps

Selecting Tarp Fabrics ...Please Note Recommendations*

Stock Tarps are now 84" or 88" Wide and priced as each. Custom width, flapped or pleated are priced per lineal foot. To ensure tarp order accuracy, **please specify part no., width and length** on provided spec sheet (inside front cover).

Premium Mesh: For General Applications



- **Strongest mesh** fabric you can get in the industry for general tarping
- Premium 7.7 oz. woven fabric made of two, 1,000 denier polyester twisted strands coated with UV resistant PVC
- 7.5x5 weave contains even fine particles yet breathes enough to minimize flapping
- Not broken down by sunlight like common PVC coated materials
- Edges bound to add strength and provide a finished appearance

Heavy Duty Asphalt: Premium Heavier Weight & Extra Wind Protection for Asphalt Loads



- Premium 18 oz. vinyl with heat welded finished edges
- Heavier weight minimizes tarp flapping in high wind
- Waterproof
- Grommets placed every 24" down the sides
- *Solid tarps should be pretreated between asphalt loads in the same fashion as your truck beds
- *Solid tarps, especially solid pleated and flapped tarps, should be tied down using provided grommets. This will help prevent wind damage to components caused by flopping tarps

Super Tough Mesh: for More Demanding Debris



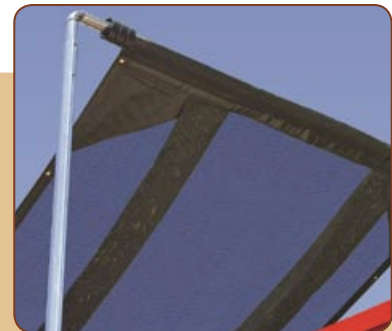
- Users experience **3 to 5 times** wear life over other scrap/refuse tarps
- Premium 13 oz Heavy Weight Woven Mesh made of 7,500 denier strands of UV resistant polypropylene
- 7x7 weave breathes enough to minimize flapping
- Not broken down by sunlight like common PVC coated materials
- Edges bound to add strength and provide a finished appearance

The Pleated Tarp Design:

Yes, you can have the benefits of both a straight tarp *and* a flapped tarp with *none* of the hassles. **Two pleated folds along the length of the tarp** actually expand up to 10' wide to function like flaps. The Pleated Tarp lets you:

- Eliminate shock cords
- Forget the seams
- Stop straining to reach the center of a flapped tarp
- Save Money

Pleated Tarps are a custom order and available in Premium Mesh, Super Tough Mesh or Heavy Duty Asphalt fabrics.



**The Pleated Tarp
Wider, Better and
Costs Less.**

Roll-Rite® — Clearly the Best.

1-800-297-9905

John Dsuban Spring Service Inc.
Cincinnati, Ohio
(877) 537-8226

Items listed as each unless otherwise indicated.

Stock & Custom Tarps

Premium Mesh:

| Premium Mesh Stock 84" OR 88" Wide | | |
|---------------------------------------|----------------|----------------|
| 84" W Part# | 88" W Part# | Length (ft) |
| 81120 | 81121 | 12 |
| 81140 | 81141 | 14 |
| 81160 | 81161 | 16 |
| 81180 | 81181 | 18 |
| 81200 | 81201 | 20 |
| 81220 | 81221 | 22 |
| 81240 | 81241 | 24 |
| 81260 | 81261 | 26 |
| 81280 | 81281 | 28 |

| Custom Premium Mesh | |
|---------------------|--------------------------------------|
| Part# | Description |
| 81010 | up to 84" wide |
| 81020 | 85"-120" wide |
| 81030 | 121"-144" wide |
| 81025 | up to 144" wide w/ customizations |
| 81050 | 12" Flaps w/Grommets |
| 81060 | 12" Flaps w/Shock-cord |

Heavy Duty Asphalt:

| Heavy Duty Asphalt Stock 84" OR 88" Wide | | |
|---|----------------|----------------|
| 84" W Part# | 88" W Part# | Length (ft) |
| 83120 | 83121 | 12 |
| 83140 | 83141 | 14 |
| 83160 | 83161 | 16 |
| 83180 | 83181 | 18 |
| 83200 | 83201 | 20 |
| 83220 | 83221 | 22 |
| 83240 | 83241 | 24 |
| 83260 | 83261 | 26 |

| Custom Heavy Duty Asphalt | |
|---------------------------|--------------------------------------|
| Part# | Description |
| 83010 | up to 86" wide |
| 83020 | 87"-124" wide |
| 83025 | up to 124" wide w/ customizations |
| 83050 | 12" Flaps w/Grommets |
| 83060 | 12" Flaps w/Shock-cord |

Super Tough Mesh:

| Custom Super Tough Mesh | |
|----------------------------|--------------------------------------|
| Part# | Description |
| 86020 | up to 120" wide |
| 86025 | up to 120" wide w/ customizations |
| 86050 | 12" Flaps w/Grommets |
| 86060 | 12" Flaps w/Shock-cord |

Pleated Tarps:

| Custom Pleated Tarps | |
|----------------------|-------------------------------|
| Part# | Description |
| 81040 | Pleated Mesh |
| 83040 | Pleated Heavy Duty Asphalt |
| 86040 | Pleated Super Tough Mesh |

Special reinforcement requests may incur additional charges.
All Custom Tarp Orders (super tough mesh, flapped, pleated, etc) **Must Be Accompanied**
By An Approved Drawing. (Please See Custom Order Policy, p. 23).

Items are listed as each unless otherwise indicated.

John Dsuban Spring Service Inc.
 Cincinnati, Ohio
 (877) 537-8226

Roll-Rite® — Clearly the Best.
1-800-297-9905

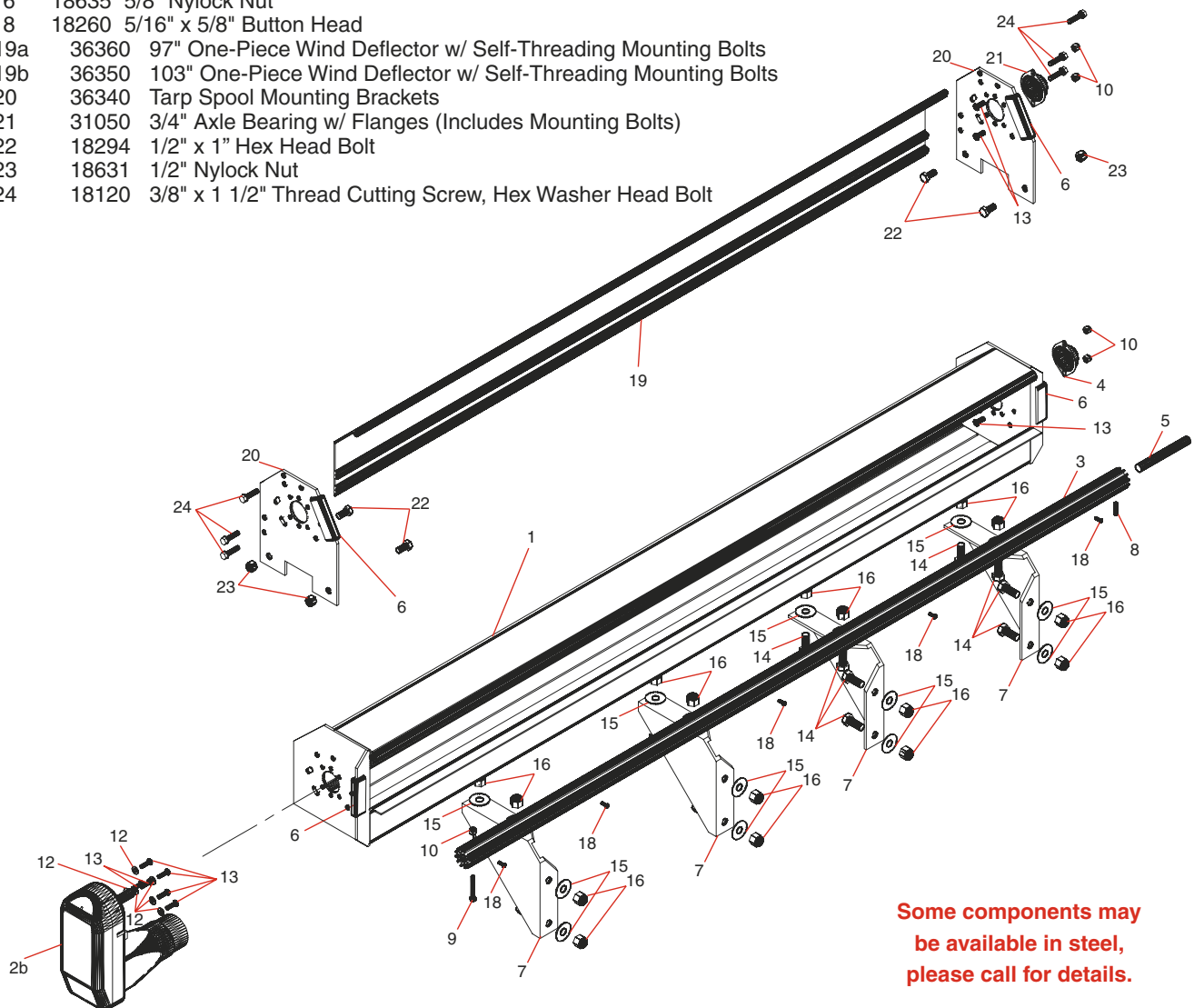
Tarp Spool Parts & Diagram

Tarp Spool

Diagram Covers the Following Spool Kits from p. 5:

36010, 36060, 36110 TarpMaster® Tarp Spool w/ Housing
 36020, 36070, 36120 Super Duty Tarp Spool w/ Housing
 36370, 36380, 36390, 36400 Tarp Spool Only
 36460, 36470, 36480, 36490 Tarp Spool w/ Wind Deflector

| Ref# | Part# | Description |
|------|-------|--|
| 1a | 36150 | 92" Tarp Spool Housing (Shell Only) |
| 1b | 36160 | 98" Tarp Spool Housing (Shell Only) |
| 1c | 36170 | 104" Tarp Spool Housing (Shell Only) |
| 2 | 10120 | Gear Motor, Super Duty |
| 3a | 31020 | 91" Pre-Threaded Tarp Axle w/ Stub Shaft |
| 3b | 31030 | 97" Pre-Threaded Tarp Axle w/ Stub Shaft |
| 3c | 31040 | 103" Pre-Threaded Tarp Axle w/ Stub Shaft |
| 4 | 31050 | 3/4" Axle Bearing w/ Flanges (Each, Includes Mounting Bolts) |
| 5 | 10160 | 3/4" x 5 1/2" Axle Stub Shaft |
| 6 | 36300 | Rubber Bumper for Tarp Spool |
| 7 | 36850 | Aluminum Housing Support Braces |
| 8 | 18370 | 5/16" x 1 1/4" Spring Pin |
| 9 | 18280 | 5/16" x 2 1/2" Bolt |
| 10 | 18613 | 5/16" Nylock Nut |
| 12 | 18400 | 5/16" Flat Washer |
| 13 | 18210 | 5/16" x 7/8" Button Head Bolt |
| 14 | 18710 | 5/8" x 1 1/2" Hex Head Bolt |
| 15 | 18414 | 5/8" USS Flat Washer |
| 16 | 18635 | 5/8" Nylock Nut |
| 18 | 18260 | 5/16" x 5/8" Button Head |
| 19a | 36360 | 97" One-Piece Wind Deflector w/ Self-Threading Mounting Bolts |
| 19b | 36350 | 103" One-Piece Wind Deflector w/ Self-Threading Mounting Bolts |
| 20 | 36340 | Tarp Spool Mounting Brackets |
| 21 | 31050 | 3/4" Axle Bearing w/ Flanges (Includes Mounting Bolts) |
| 22 | 18294 | 1/2" x 1" Hex Head Bolt |
| 23 | 18631 | 1/2" Nylock Nut |
| 24 | 18120 | 3/8" x 1 1/2" Thread Cutting Screw, Hex Washer Head Bolt |



Some components may be available in steel, please call for details.

Items listed as each unless otherwise indicated.

Roll-Rite® — Clearly the Best.

1-800-297-9905

John Dsuban Spring Service Inc.
 Cincinnati, Ohio
 (877) 537-8226

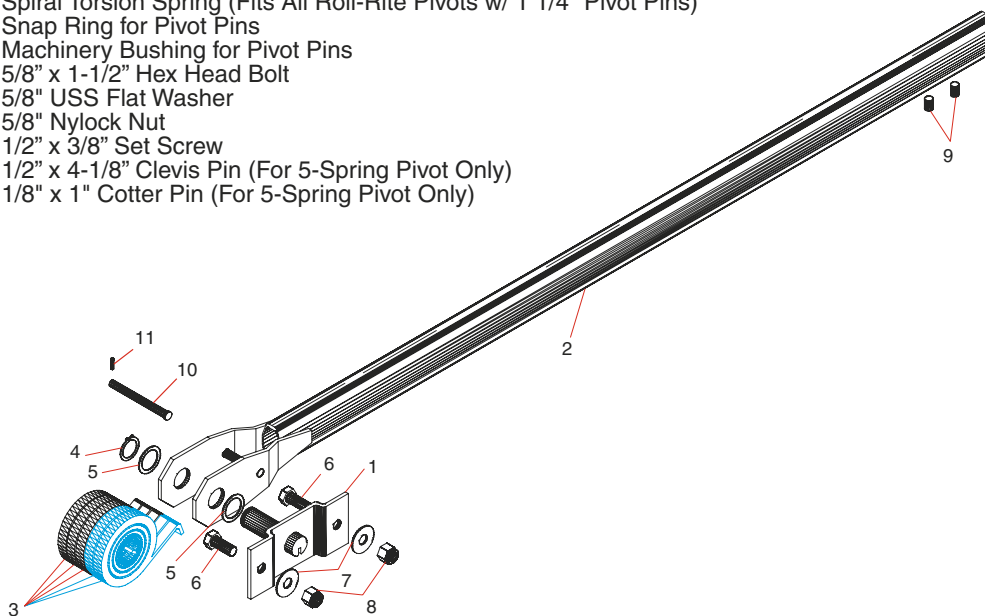
External Mount Pivot Parts

Diagram Covers the Following Pivot Sets from p. 6:

46430, 46440, 46450 External Mount Pivot Sets

Ref# Part# Description

| | | |
|----|-------|--|
| 1a | 45330 | 3-Spring Pivot Pin—includes a 47000 & 2-47010 (Steel or Alum. External Mounts) |
| 1b | 45340 | 4-Spring Pivot Pin—includes a 47000 & 2-47010 (Steel or Alum. External Mounts) |
| 1c | 45350 | 5-Spring Pivot Pin—includes a 47000 & 2-47010 (Steel or Alum. External Mounts) |
| 2a | 46130 | Pivot Arm w/ Side Plates and Set Screws for 3-Spring External Mount (48") |
| 2b | 46140 | Pivot Tube w/ Side Plates and Set Screws for 4-Spring External Mount (84") |
| 2c | 46150 | Pivot Tube w/ Side Plates and Set Screws for 5-Spring External Mount (84") |
| 3 | 47230 | Spiral Torsion Spring (Fits All Roll-Rite Pivots w/ 1 1/4" Pivot Pins) |
| 4 | 47000 | Snap Ring for Pivot Pins |
| 5 | 47010 | Machinery Bushing for Pivot Pins |
| 6 | 18710 | 5/8" x 1-1/2" Hex Head Bolt |
| 7 | 18414 | 5/8" USS Flat Washer |
| 8 | 18635 | 5/8" Nylock Nut |
| 9 | 18293 | 1/2" x 3/8" Set Screw |
| 10 | 18560 | 1/2" x 4-1/8" Clevis Pin (For 5-Spring Pivot Only) |
| 11 | 18299 | 1/8" x 1" Cotter Pin (For 5-Spring Pivot Only) |



45° Pivot Elbow Kit Parts

Diagram Covers the Following Kit from p. 6:

76916 45° Pivot Elbow Kit

Ref# Part# Description

| | | |
|---|-------|---------------------------|
| 1 | 76915 | 45° Flat Pivot Tube Elbow |
| 2 | 76917 | Pivot Tube Extension, 24" |
| 3 | 18293 | 1/2" x 3/8" Set Screw |



Items are listed as each unless otherwise indicated.

John Dsuban Spring Service Inc.
Cincinnati, Ohio
(877) 537-8226

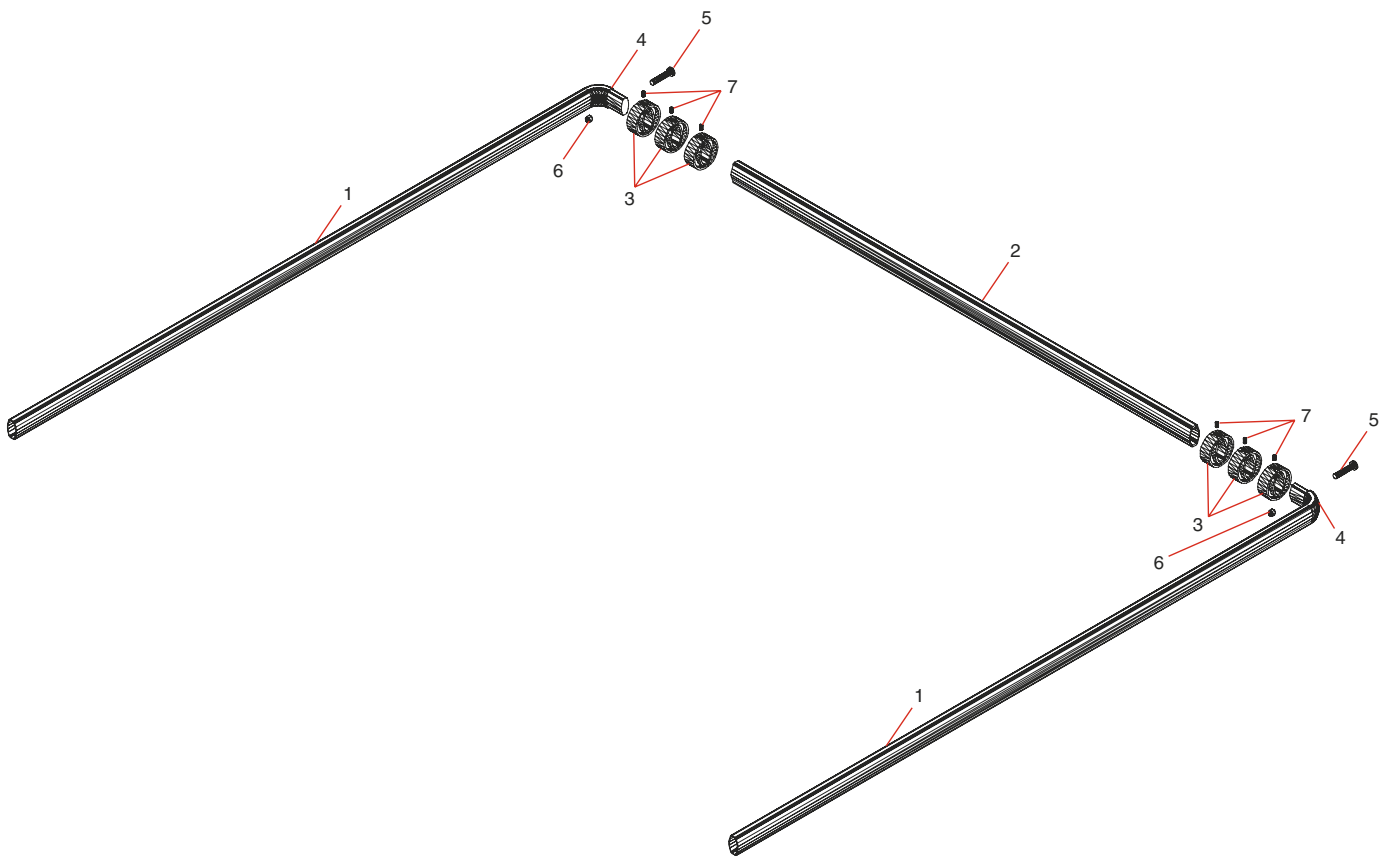
Roll-Rite® — Clearly the Best.
1-800-297-9905

Tarp Bow Only

Diagram Covers the Following Bow Sets from p. 7:

76700, 76720 Tarp Bow Set

| Ref# | Part# | Description |
|------|-------|---|
| 1 | 76760 | 98" Side Arm w/ Corner for Tarp Bow (98" plus corner) |
| 1b | 76764 | 84" Side Arm w/Corner for Tarp Bow (84" plus corner) |
| 2a | 76770 | Standard Top Tube for Tarp Bow (98" width) |
| 2b | 76870 | Wide Top Tube for Tarp Bow (105 1/2" width) |
| 3 | 76810 | Tarp Centering Flange w/ Set Screw |
| 4 | 76800 | 90° Corner |
| 5 | 18214 | 5/16" x 1 3/4" Hex Head Bolt |
| 6 | 18613 | 5/16" Nylock |
| 7 | 18228 | 5/16"-18 x 1/2" Set Screw |



Roll-Rite®— Clearly the Best.

1-800-297-9905

John Dsuban Spring Service Inc.
Cincinnati, Ohio
(877) 537-8226

Items listed as each unless otherwise indicated.

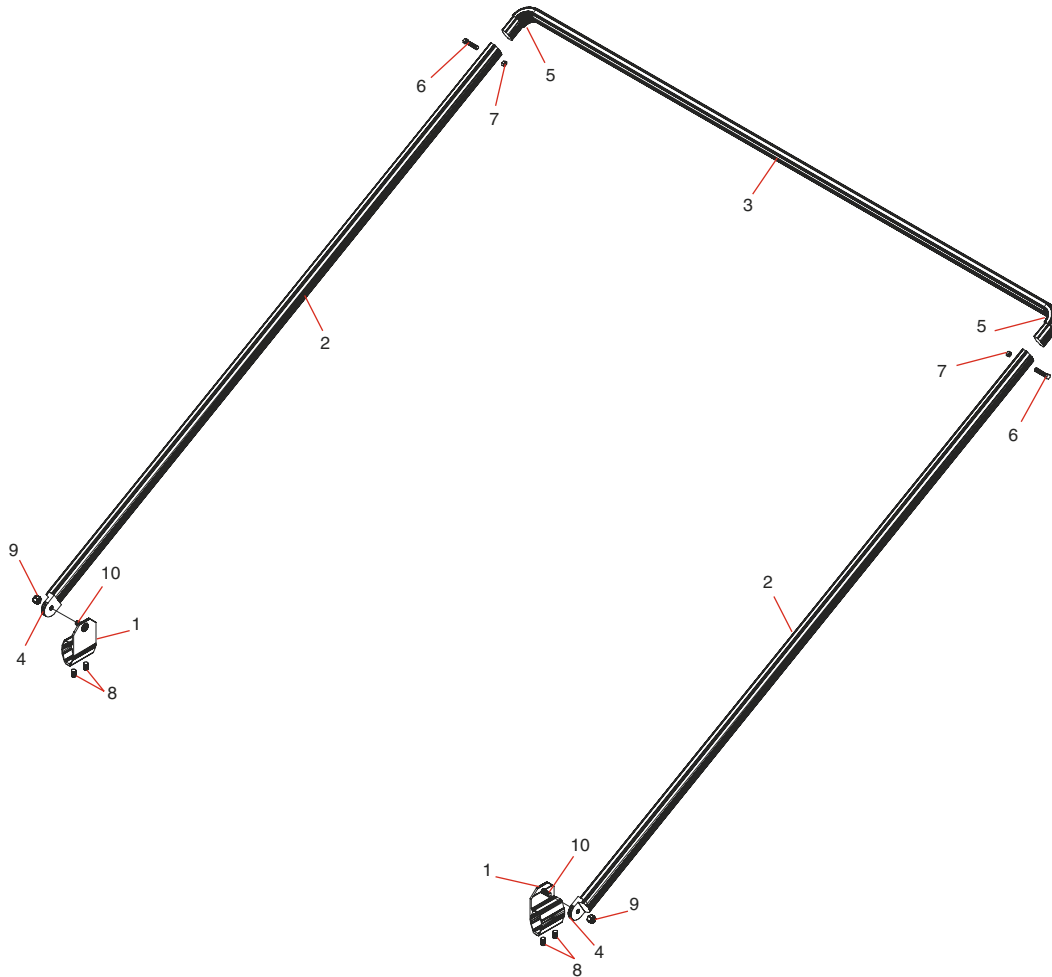
Tension Bow

Diagram Covers the Following Bow Sets from p. 7:

76710, 76730, 76840, 76850 Tension Bow Set

Ref# Part# Description

| | | |
|----|-------|---|
| 1 | 76830 | Tension Bow Mounting Bracket |
| 2a | 76780 | Side Arm w/ End Tab for Tension Bow (98" + tab) |
| 2b | 76880 | Long Side Arm w/ End Tab for Tension Bow (130" + tab) |
| 3a | 76790 | Standard Top Tube w/ Corners for Tension Bow (98" + corners) |
| 3b | 76890 | Wide Top Tube w/ Corners for Tension Bow (105 1/2" + corners) |
| 4 | 76820 | Tension Bow End Tab |
| 5 | 76800 | 90° Corner |
| 6 | 18214 | 5/16" x 1 3/4" Hex Head Bolt |
| 7 | 18613 | 5/16" Nylock |
| 8 | 18293 | 1/2" x 3/8" Set Screw |
| 9 | 18631 | 1/2" Nylock Nut |
| 10 | 18130 | 1/2" x 1-1/4" Ribbed Neck Carriage Bolt |



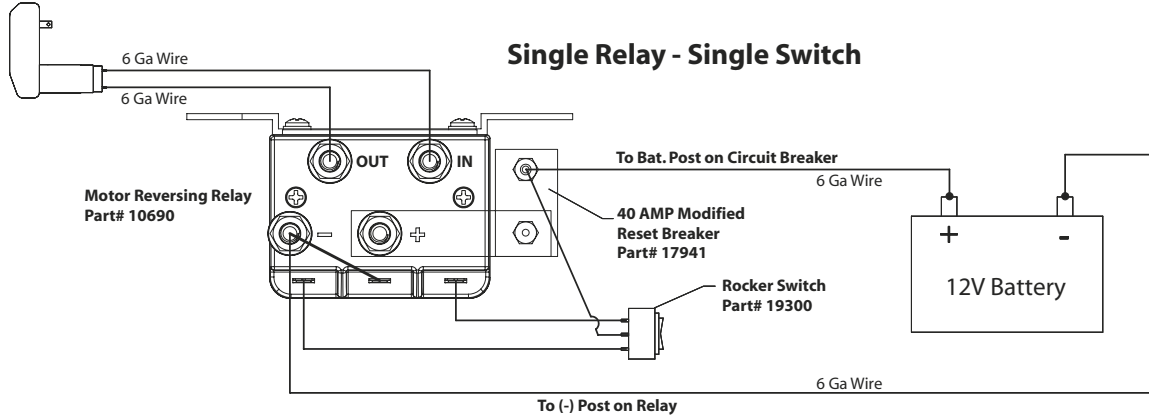
Items are listed as each unless otherwise indicated.

John Dsuban Spring Service Inc.
Cincinnati, Ohio
(877) 537-8226

Roll-Rite® — Clearly the Best.
1-800-297-9905

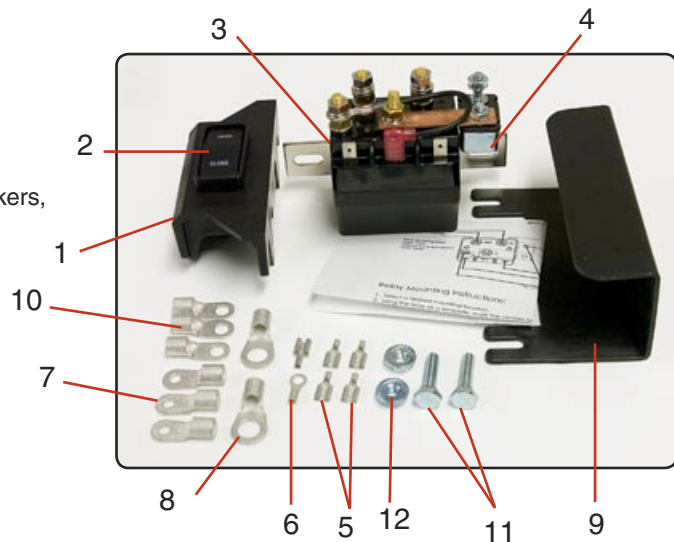
10900 Rocker Switch Electric Kit Specifications:

- 40 Amp Modified Reset Breaker #17941
- Motor Reversing Relay #10690
- Momentary Rocker Switch #19300
- 6 Ga. Dual Conductor Wire #11330
- 14 Ga. 3-Conductor Wire #11410



10900 Electric Kit & Replacement Parts:

| Ref# | Part# | Description |
|------|-------|--|
| 1 | 10390 | Mounting Bracket for Rocker Switch |
| 2 | 19300 | Rocker Switch (OPEN-CLOSE) |
| 3 | 10690 | HD Motor Reversing Relay (12 Volt) |
| 4 | 17941 | 40 Amp. Modified Reset Breaker |
| 5 | 16180 | B3FE-250 14 ga. Quick Disconnect Terminal |
| 6 | 16170 | B1R-56 14 ga. Terminal w/ 5/16" ring |
| 7 | 16020 | E1R-10 Terminal for the Switch, Circuit Breakers, And Motors |
| 8 | 16030 | E1R-38 Terminals for the Battery |
| 9 | 10685 | Cover for 10690 Relay |
| 10 | 16021 | 6ga Terminal w/ 1/4" Ring |
| 11 | 18700 | 1/4" x 1" Hex Head Bolt |
| 12 | 18620 | 1/4" Wiz Nut |



For Technical Services:
1-800-297-9905
www.RollRite.com

John Dsuban Spring Service Inc
 4830 Duff Drive
 Cincinnati, Oh, 45246
 (877) 537-8226

**AUTHORIZED
 DISTRIBUTOR:**

