

4

3

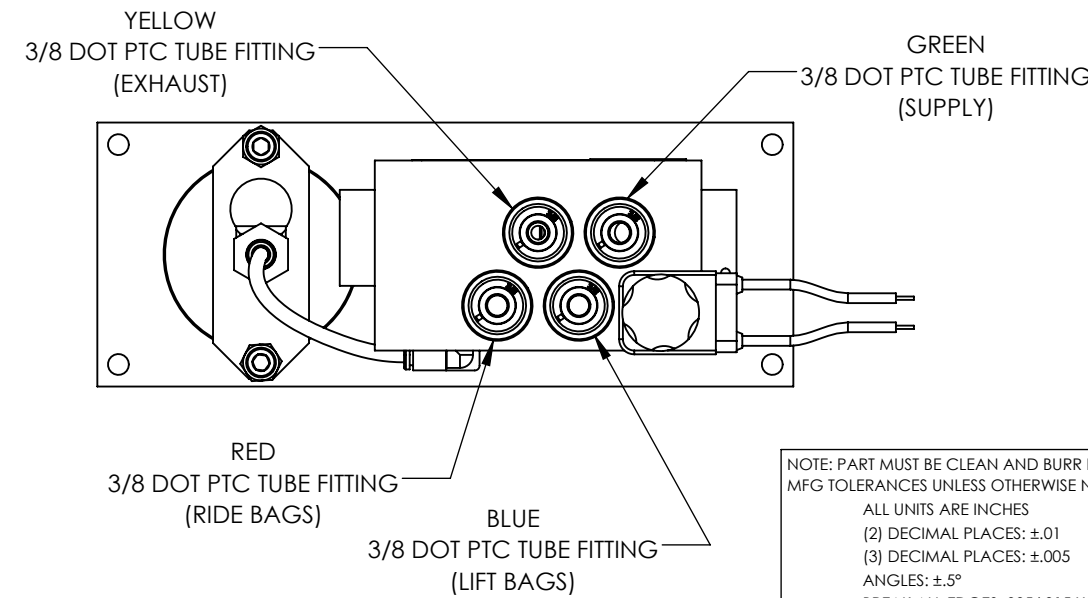
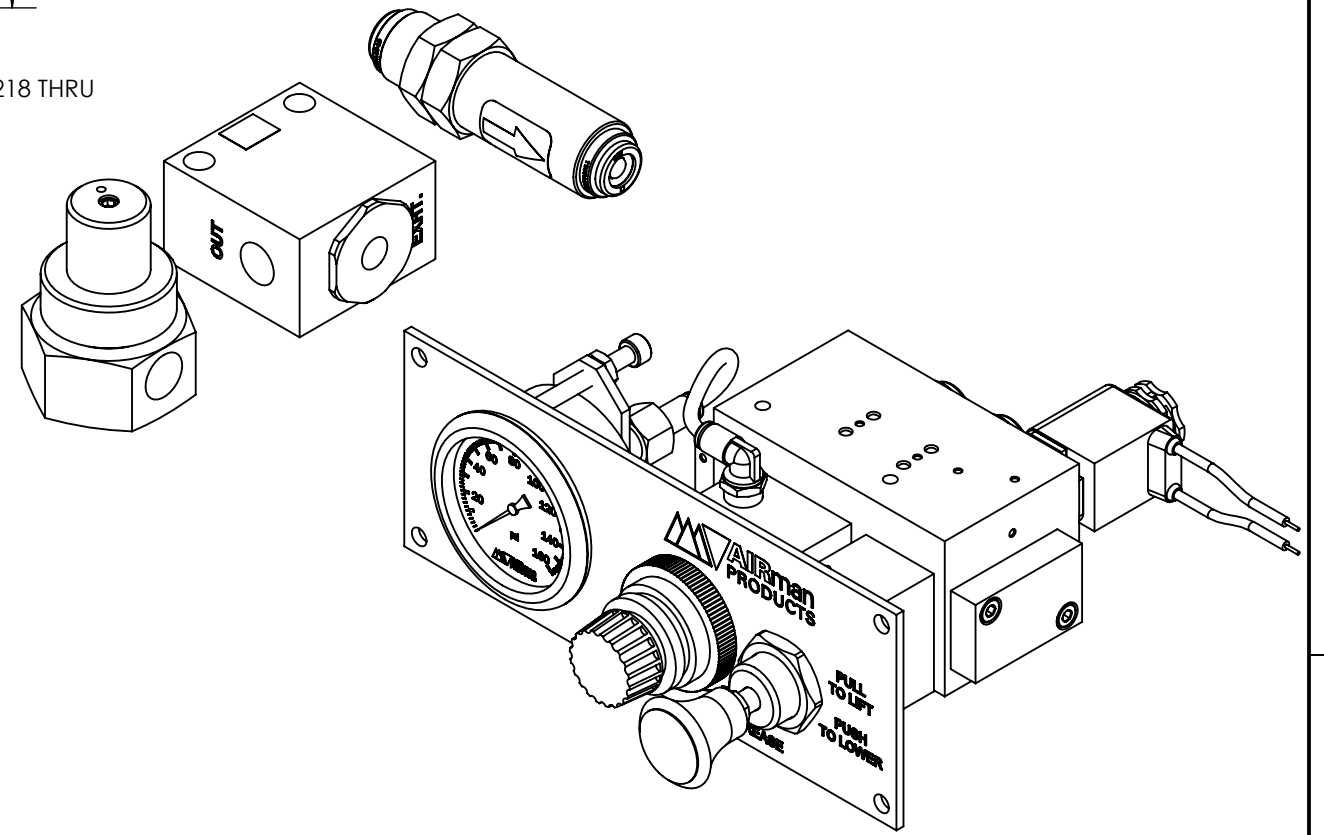
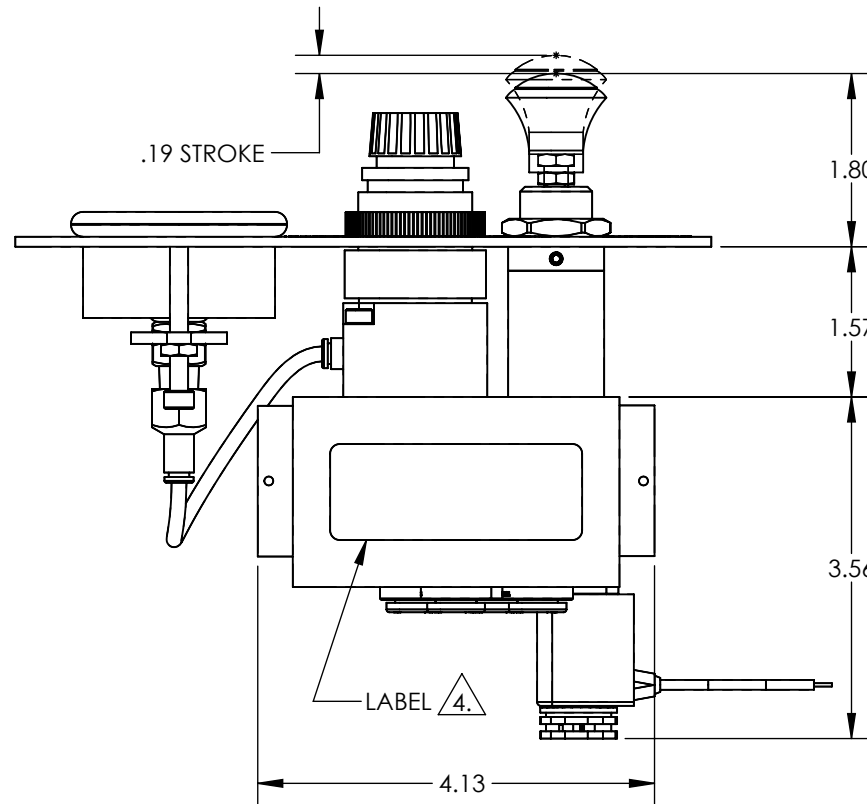
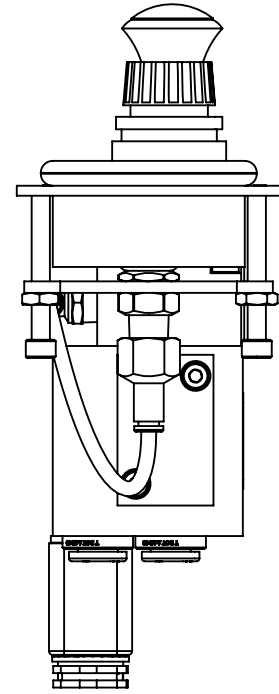
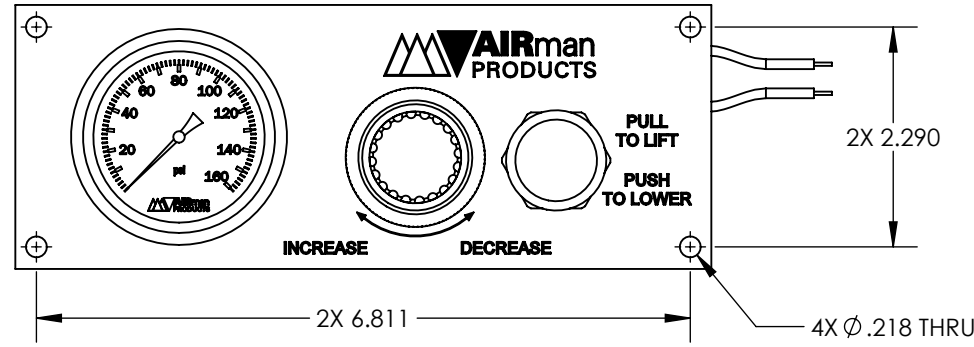
2

1

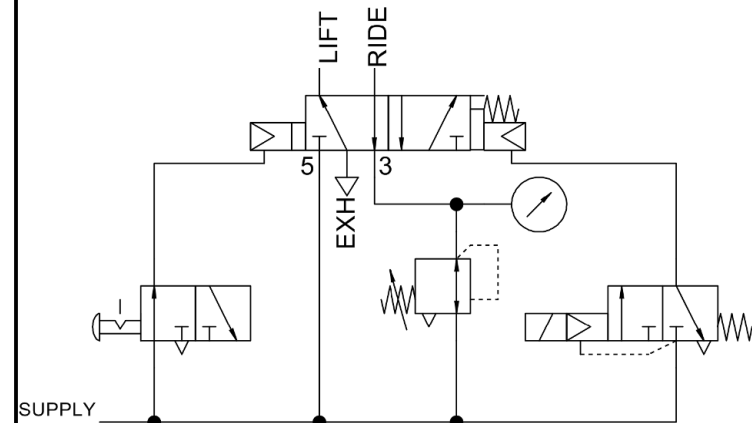
NOTES:

- 1. APPLICABLE STANDARDS/SPECIFICATIONS:
ASME Y14.5M-1994, DIMENSIONING AND TOLERANCING
ASME Y14.38-1999, ABBREVIATIONS
- 2. COMPONENT OR ITEM TO BE COMPLIANT WITH THE MOST CURRENT REVISION OF THE RoHS / Wee DIRECTIVE FOR THE REDUCTION OF HAZARDOUS SUBSTANCES AND MATERIALS.
- 3. ALL DIMENSIONS ARE FOR REFERENCE ONLY.
- 4. LABEL ORIENTATION SHOWN UPSIDE DOWN IN VIEW.
- 5. ITEMS PLACED IN LABELED AIRMAN BOX

REV	DATE	EC #	ZONE	DESCRIPTION	DRAWN	CKD
A	2020-01-06			ORIGINATED	JMA/NR	CED
A1	2021-12-14			ADD NON-INVENTORY BOX AND UPDATE STRUCTURE TO AB2400-B04	NR	JMA

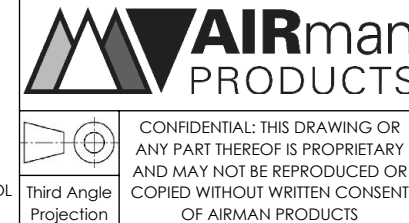


FUNCTION	AIR CONTROL KIT FOR LIFT AXLE WITH REGULATED RIDE, STEERABLE INSIDE MOUNTED (SSI)
MECHANICAL MATERIALS	ALUMINUM BODY & NYLON KNOB
SEALS	LOW TEMP. NITRILE AND LOW COMP. SET POLYURETHANE
FASTENERS	STAINLESS STEEL
MTG STYLE	INSIDE BRACKET MOUNT
ASSY LUBRICATION	HEAVY TRANSPORT SILICONE
FLOW	N/A
TEMP	-40 TO 180°F
FILTRATION	40 MICRON RECOMMENDED
SYSTEM LUBRICATION REQ'D	N/A
PRESSURE RANGE	MIN: 60 PSI MAX: 150 PSI
LEAK	MAX: 30 SCCM
ELECTRICAL VOLTAGE	12 VDC
CURRENT	5W



CUSTOMER PRINT

NOTE: PART MUST BE CLEAN AND BURR FREE
MFG TOLERANCES UNLESS OTHERWISE NOTED:
ALL UNITS ARE INCHES
(2) DECIMAL PLACES: ±.01
(3) DECIMAL PLACES: ±.005
ANGLES: ±.5°
BREAK ALL EDGES .005/.015 X 45°
MACHINED SURFACES TO BE 63 RMS
CRITICAL CHARACTERISTIC - CONTROL PLAN REQUIRED



DRAWN BY	NR	DESCRIPTION
NR <td>2019-12-24</td> <td>VALVE ASSY, (SSI) LIFT AXLE KIT</td>	2019-12-24	VALVE ASSY, (SSI) LIFT AXLE KIT
DRAWN DATE	B	PART NUMBER
DRAWING SIZE	SEE NOTES	B2400-B04
MATERIAL	1:2	
SCALE	1 OF 1	
SHEET #		

4

3

2

1

B

B

A

A