

4

3

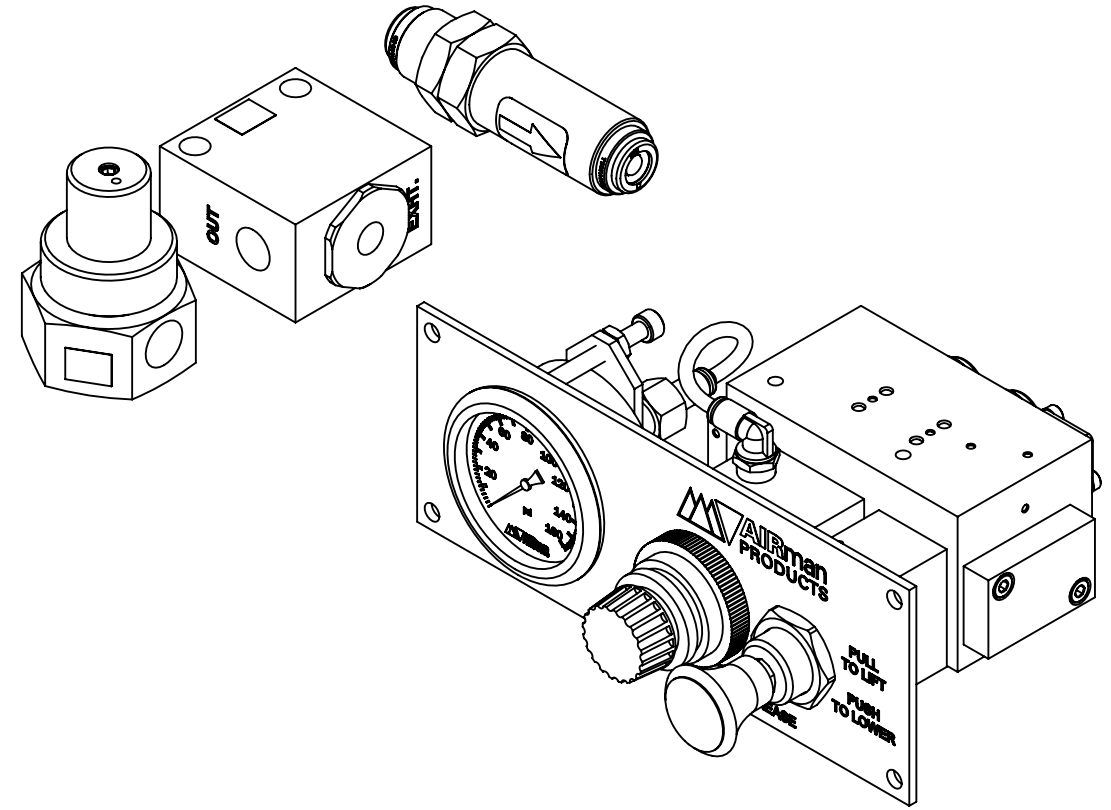
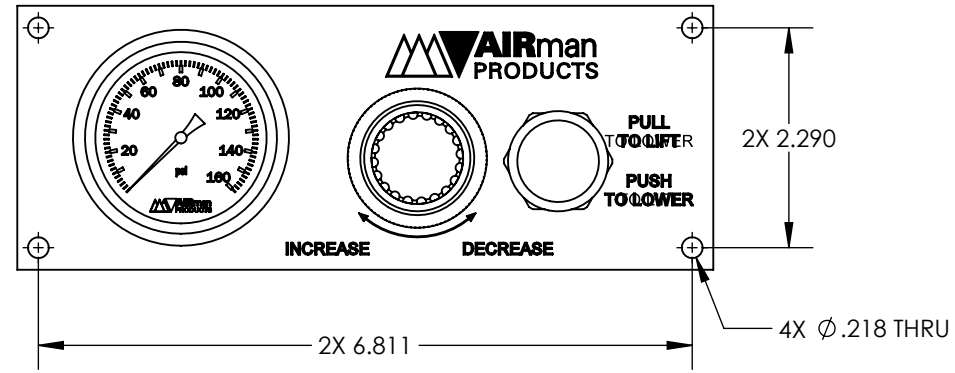
2

1

NOTES:

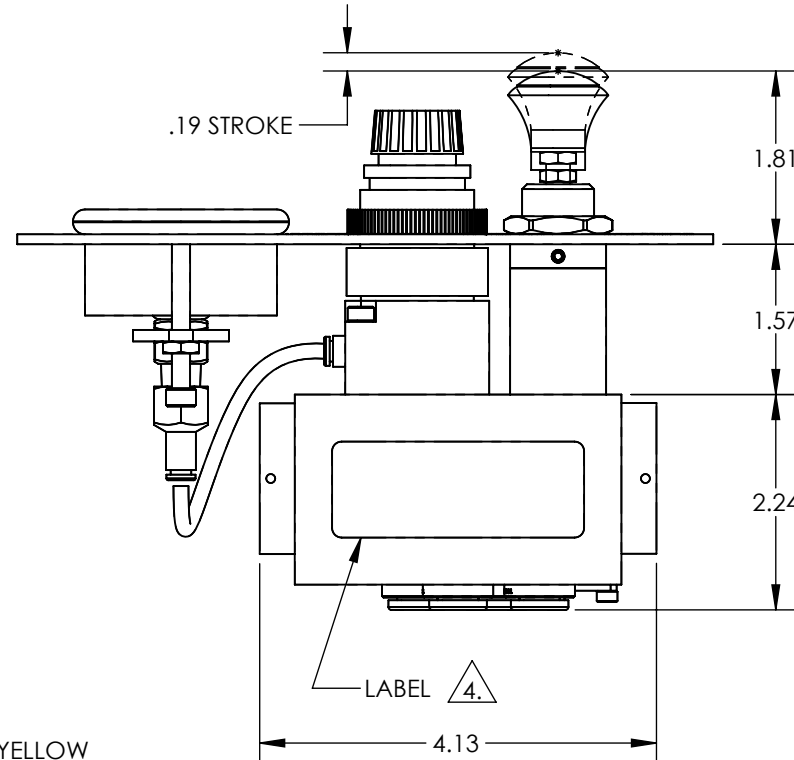
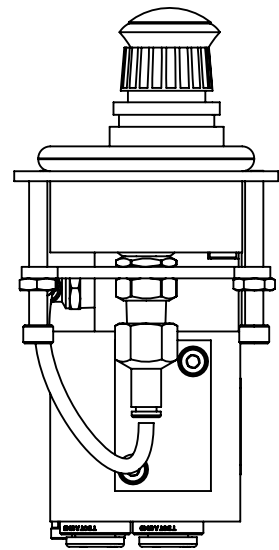
- 1. APPLICABLE STANDARDS/SPECIFICATIONS:  
ASME Y14.5M-1994, DIMENSIONING AND TOLERANCING  
ASME Y14.38-1999, ABBREVIATIONS
- 2. COMPONENT OR ITEM TO BE COMPLIANT WITH THE MOST CURRENT REVISION OF THE RoHS / Wee DIRECTIVE FOR THE REDUCTION OF HAZARDOUS SUBSTANCES AND MATERIALS.
- 3. ALL DIMENSIONS ARE FOR REFERENCE ONLY.
- 4. LABEL ORIENTATION SHOWN UPSIDE DOWN IN VIEW.
- 5. ITEMS PLACED IN LABELED AIRMAN BOX.

REV	DATE	EC #	ZONE	DESCRIPTION	DRAWN	CKD
A	2019-12-24			ORIGINATED	JMA/NR	CED
A1	2021-12-14			ADD NON-INVENTORY BOX AND UPDATE STRUCTURE TO AB2400-B03	NR	JMA



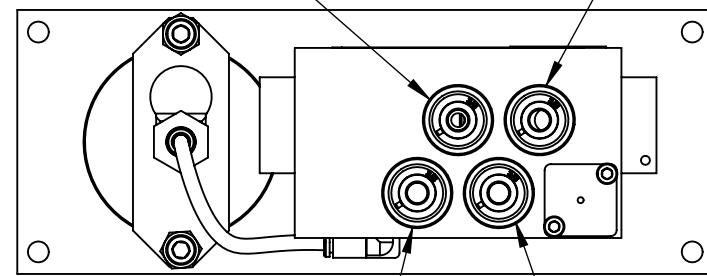
B

B



YELLOW 3/8 DOT PTC TUBE FITTING (EXHAUST)

GREEN 3/8 DOT PTC TUBE FITTING (SUPPLY)



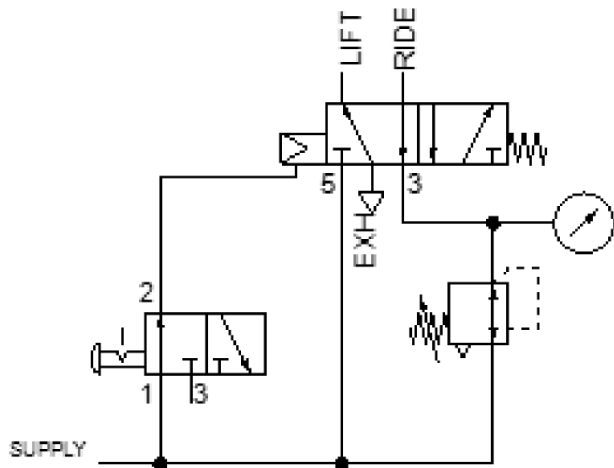
RED 3/8 DOT PTC TUBE FITTING (RIDE BAGS)

BLUE 3/8 DOT PTC TUBE FITTING (LIFT BAGS)

FUNCTION	AIR CONTROL KIT FOR LIFT AXLE WITH REGULATED RIDE. NON-STEERABLE INSIDE MOUNTED (NSI)
MECHANICAL MATERIALS	ALUMINUM BODY & NYLON KNOB
SEALS	LOW TEMP. NITRILE AND LOW COMP. SET POLYURETHANE
FASTENERS	STAINLESS STEEL
MTG STYLE	INSIDE BRACKET MOUNT
ASSY LUBRICATION	HEAVY TRANSPORT SILICONE
FLOW	N/A
TEMP	-40 TO 180°F
FILTRATION	40 MICRON RECOMMENDED
SYSTEM LUBRICATION REQ'D	N/A
PRESSURE RANGE	MIN: 60 PSI MAX: 150 PSI
LEAK	MAX: 30 SCCM
ELECTRICAL VOLTAGE	N/A
CURRENT	N/A

A

A



# CUSTOMER PRINT

NOTE: PART MUST BE CLEAN AND BURR FREE  
MFG TOLERANCES UNLESS OTHERWISE NOTED:  
ALL UNITS ARE INCHES  
(2) DECIMAL PLACES: ±.01  
(3) DECIMAL PLACES: ±.005  
ANGLES: ±.5°  
BREAK ALL EDGES .005/.015 X 45°  
MACHINED SURFACES TO BE 63 RMS  
CRITICAL CHARACTERISTIC - CONTROL PLAN REQUIRED

Third Angle Projection

CONFIDENTIAL: THIS DRAWING OR ANY PART THEREOF IS PROPRIETARY AND MAY NOT BE REPRODUCED OR COPIED WITHOUT WRITTEN CONSENT OF AIRMAN PRODUCTS

DRAWN BY	NR	DESCRIPTION
NR	2019-12-24	VALVE ASSY, (NSI) LIFT AXLE KIT
DRAWN DATE	B	
DRAWING SIZE	SEE NOTES	PART NUMBER
MATERIAL	1:2	B2400-B03
SCALE	1 OF 1	
SHEET #		

4

3

2

1