

4

3

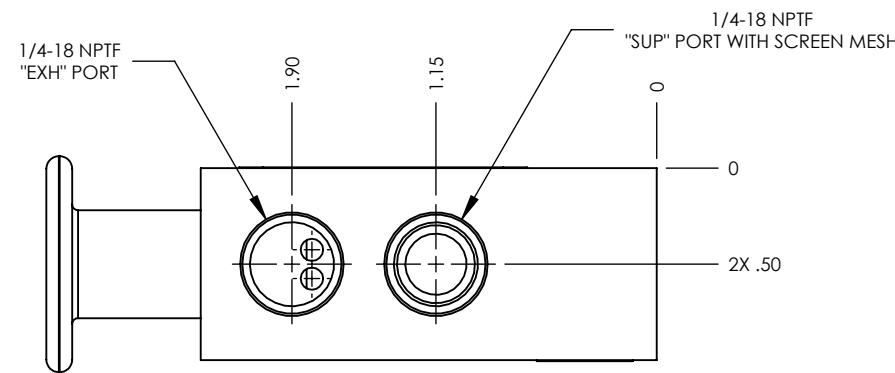
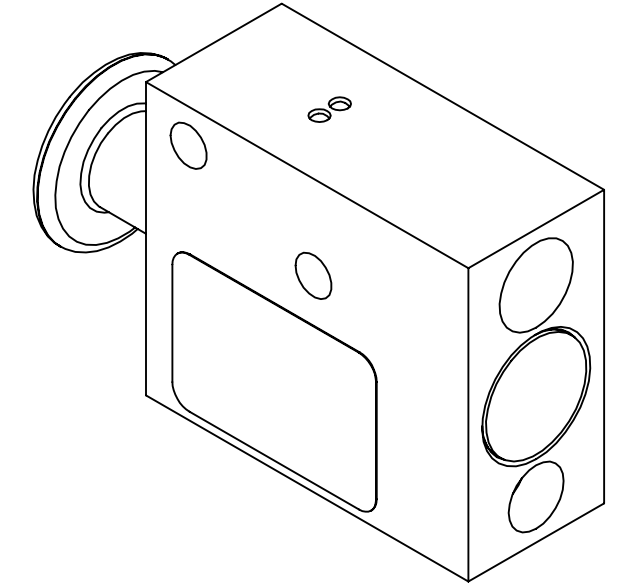
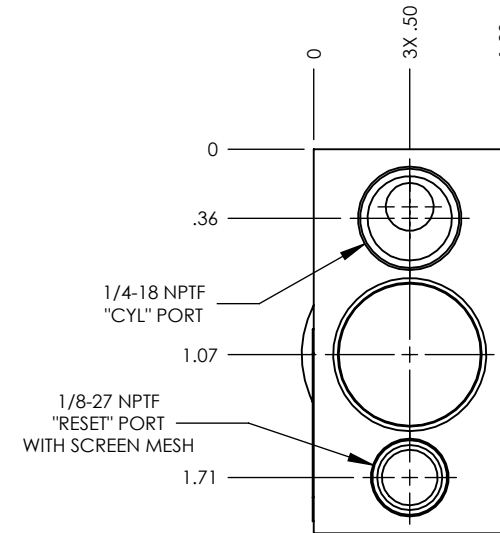
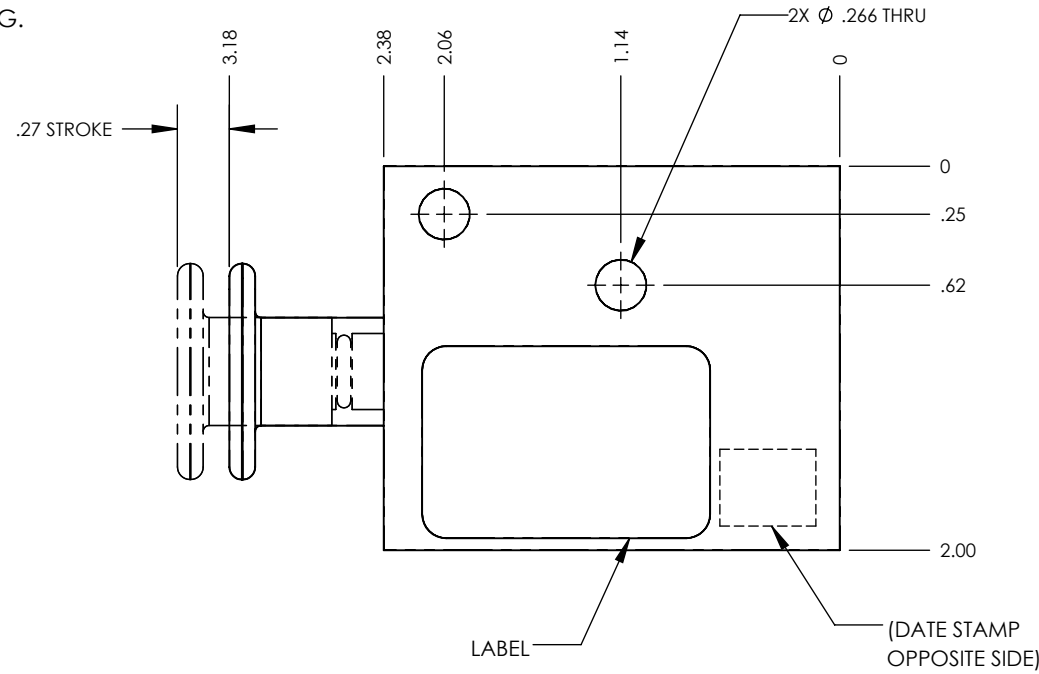
2

1

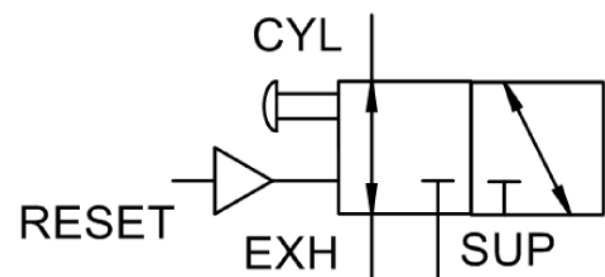
NOTES:

- 1. APPLICABLE STANDARDS/SPECIFICATIONS:
ASME Y14.5M-1994, DIMENSIONING AND TOLERANCING
ASME Y14.38-1999, ABBREVIATIONS
- 2. COMPONENT OR ITEM TO BE COMPLIANT WITH THE MOST CURRENT REVISION OF THE RoHS / Wee DIRECTIVE FOR THE REDUCTION OF HAZARDOUS SUBSTANCES AND MATERIALS.
- 3. TABLE PRINT: USE BOM ASSOCIATED WITH AIRMAN ASSEMBLY PART NUMBER. SUFFIXES (EXAMPLES -CLR AND -BLK) ATTACHED TO THE END OF THE AIRMAN PART NUMBER WILL INDICATE THE COLUMN TO USE.
- 4. ITEM INDIVIDUALLY SEALED IN BAG.

REV	DATE	EC #	ZONE	DESCRIPTION	DRAWN	CKD
A	2014-02-20			ORIGINATED	AJ	
A1	2018-04-19			SOLIDWORKS RELEASE	MJO	CED
A2	2019-11-14			UPDATE LABEL & NAME	NR	CED



FUNCTION	3/2 PUSH/PULL W/ AIR PILOT RESET
MECHANICAL MATERIALS	ALUMINUM BODY & KNOB
SEALS	LOW TEMP. NITRILE, LOW COMP. SET POLYURETHANE
FASTENERS	N/A
MTG STYLE	BODY SIDE MOUNT
ASSY LUBRICATION	HEAVY TRANSPORT SILICONE
FLOW	.8 Cv
TEMP	-40°F TO 180°F
FILTRATION	SS MESH
SYSTEM LUBRICATION REQ'D	N/A
PRESSURE RANGE	MIN: 0 MAX: 150 psi
LEAK	<20sccm @120PSI
ELECTRICAL VOLTAGE	N/A
CURRENT	N/A



CUSTOMER PRINT

AIRman PART NUMBER CHART	
AIRman PART NUMBER	ANODIZATION COLOR
B2400-889-BLK	BLACK-ANODIZED
B2400-889-CLR	CLEAR-ANODIZED

NOTE: PART MUST BE CLEAN AND BURR FREE
MFG TOLERANCES UNLESS OTHERWISE NOTED:
ALL UNITS ARE INCHES
(2) DECIMAL PLACES: ±.01
(3) DECIMAL PLACES: ±.005
ANGLES: ±.5°
BREAK ALL EDGES .005/.015 X 45°
MACHINED SURFACES TO BE 63 RMS
CRITICAL CHARACTERISTIC - CONTROL PLAN REQUIRED

CONFIDENTIAL: THIS DRAWING OR ANY PART THEREOF IS PROPRIETARY AND MAY NOT BE REPRODUCED OR COPIED WITHOUT WRITTEN CONSENT OF AIRMAN PRODUCTS

DRAWN BY	NR	DESCRIPTION
NR	2019-11-14	VALVE, .25 NPT, 3-2, PUSH-PULL, RESET
DRAWN DATE	B	PART NUMBER
DRAWING SIZE	SEE NOTES	B2400-889
MATERIAL	1:2	
SCALE	1 OF 1	
SHEET #		

4

3

2

1

B

B

A

A