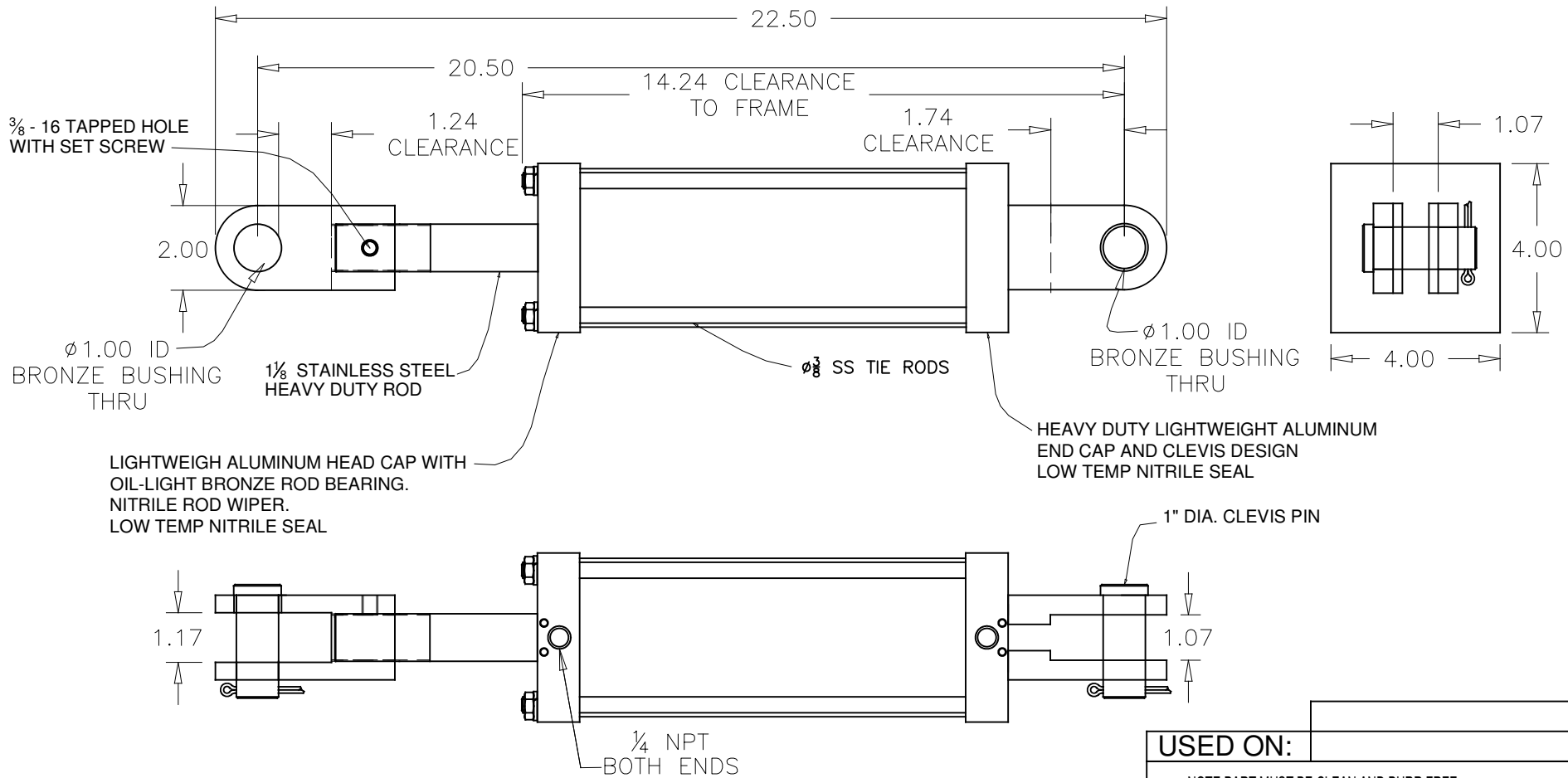


ECN	REV	CHANGE	DATE	BY
	A	ORIGINATED	2/16/09	JRK



3.50" BORE X 1/8" WALL ANODIZED ALUMINUM CYL  
 ALUMINUM END CAPS  
 STAINLESS STEEL ROD

<b>USED ON:</b>	
NOTE: PART MUST BE CLEAN AND BURR FREE MFG TOLERANCES UNLESS OTHERWISE NOTED: TOLERANCES: (2) DECIMAL PLACES +/- .01 (3) DECIMAL PLACES +/- .005 ANGLES: +/- .5 DEG. BREAK ALL EDGES .005/.015 X 45° MACHINED SURFACES TO BE 63 RMS	
<b>DESC 1:</b>	3.50" BORE CYL. X 8" STROKE

DO NOT SCALE PRINT

CONFIDENTIAL  
 THIS DRAWING OR ANY PART THEREOF IS  
 PROPRIETARY AND MAY NOT BE REPRODUCED  
 OR COPIED WITHOUT WRITTEN CONSENT OF  
 AIRMAN INC.

	Drawn & Reviewed	 Creative Pneumatics WWW.AIRMANINC.COM COPYRIGHT 1997 AIRMAN INC.®	MATERIAL:		PART IDENTIFIER
DATE			STOCK SIZE		<b>B3000-517</b> CUSTOMER PG. 1 OF 1
NAME	JRK		SCALE:	N/A	
			FINISH:		