

4

3

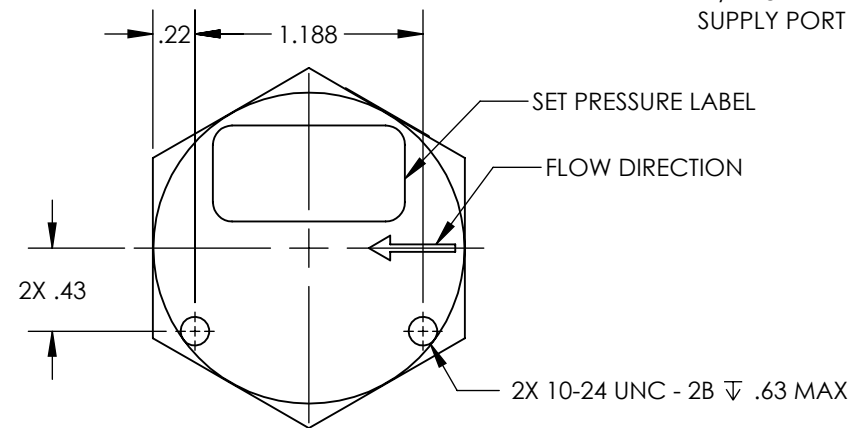
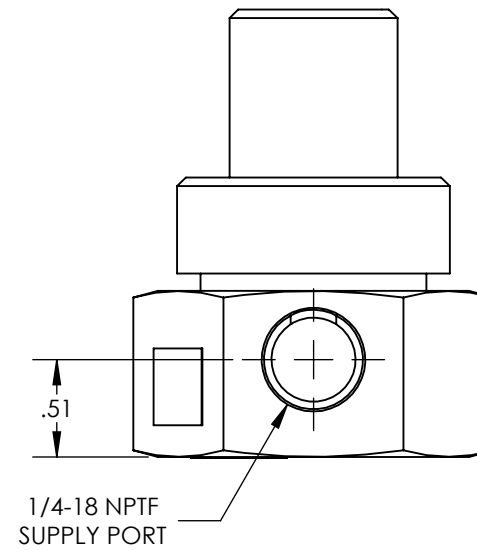
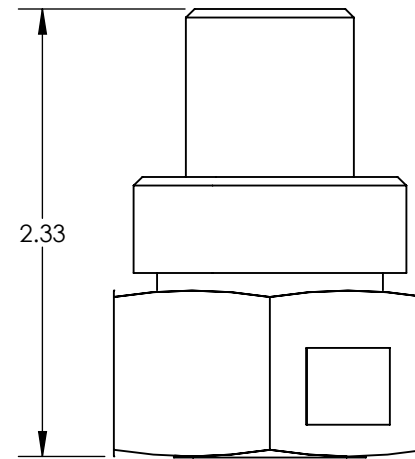
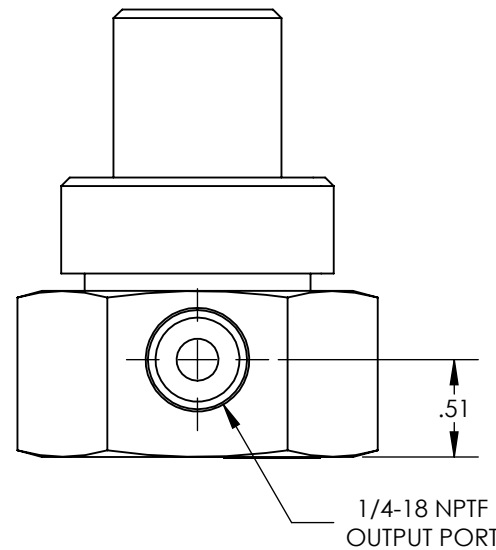
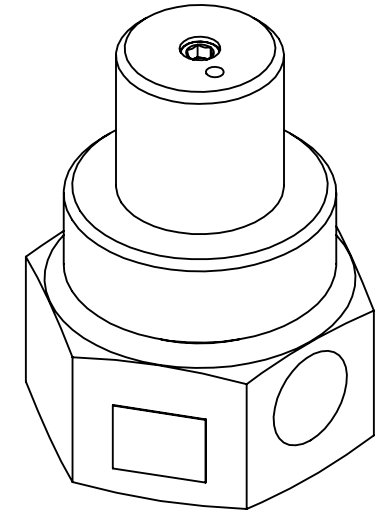
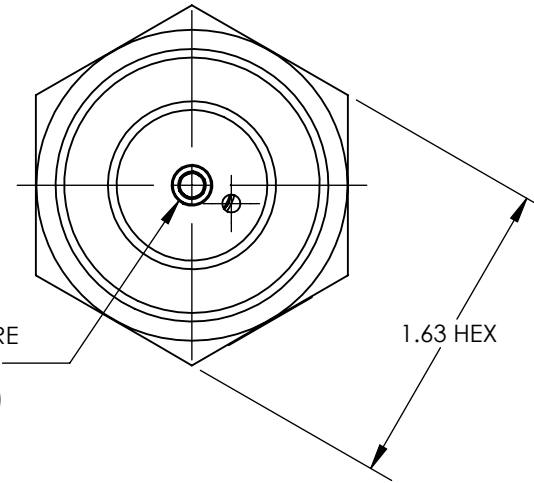
2

1

| REV | DATE       | EC # | ZONE | DESCRIPTION | DRAWN | CKD |
|-----|------------|------|------|-------------|-------|-----|
| A   | 2020-09-23 |      |      | ORIGINATED  | NR    | JMA |

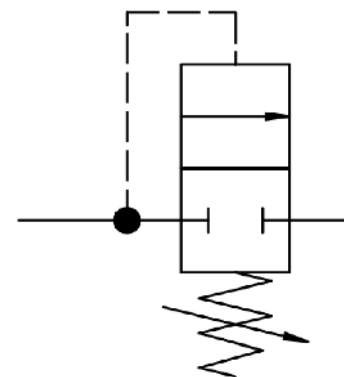
NOTES:

1. APPLICABLE STANDARDS/SPECIFICATIONS:  
ASME Y14.5M-1994, DIMENSIONING AND TOLERANCING  
ASME Y14.38-1999, ABBREVIATIONS
2. COMPONENT OR ITEM TO BE COMPLIANT WITH THE MOST CURRENT REVISION OF THE RoHS / Wee DIRECTIVE FOR THE REDUCTION OF HAZARDOUS SUBSTANCES AND MATERIALS.
3. SET PRESSURE OF 70 PSI.
4. SET PRESSURE IS THE PRESSURE AT WHICH THE VALVE STOPS FLOWING. FULL FLOW OCCURS AT 10 PSI ABOVE SET PRESSURE.
5. ALL DIMENSIONS ARE FOR REFERENCE ONLY.
6. ITEM INDIVIDUALLY SEALED IN LABELED BAG.
7. ITEM IS RETAIL PACKED PP2-70.

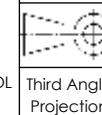


|                          |  |
|--------------------------|--|
| FUNCTION                 | ONE WAY RELIEF                         |
| MECHANICAL MATERIALS     | ALUMINUM BODY                          |
| SEALS                    | LOW TEMP. NITRILE                      |
| FASTENERS                | N/A                                    |
| MTG STYLE                | BOTTOM                                 |
| ASSY LUBRICATION         | HEAVY TRANSPORT SILICONE               |
| FLOW                     | 1.0 Cv                                 |
| TEMP                     | -40 TO 180°F                           |
| FILTRATION               | 40 MICRON REQUIRED                     |
| SYSTEM LUBRICATION REQ'D | N/A                                    |
| PRESSURE RANGE           | MIN: 20 psi MAX: 150 psi<br>PILOT: N/A |
| LEAK                     | N/A                                    |
| ELECTRICAL VOLTAGE       | N/A                                    |
| CURRENT                  | N/A                                    |

# CUSTOMER PRINT



NOTE: PART MUST BE CLEAN AND BURR FREE  
MFG TOLERANCES UNLESS OTHERWISE NOTED:  
ALL UNITS ARE INCHES  
(2) DECIMAL PLACES:  $\pm$ .01  
(3) DECIMAL PLACES:  $\pm$ .005  
ANGLES:  $\pm$ .5°  
BREAK ALL EDGES .005/.015 X 45°  
MACHINED SURFACES TO BE 63 RMS  
CRITICAL CHARACTERISTIC - CONTROL PLAN REQUIRED



CONFIDENTIAL: THIS DRAWING OR ANY PART THEREOF IS PROPRIETARY AND MAY NOT BE REPRODUCED OR COPIED WITHOUT WRITTEN CONSENT OF AIRMAN PRODUCTS

|              |            |                             |
|--------------|------------|-----------------------------|
| DRAWN BY     | NR         | DESCRIPTION                 |
| DRAWN DATE   | 2020-09-23 | VALVE, PRESS. PROT, .25 NPT |
| DRAWING SIZE | B          |                             |
| MATERIAL     | SEE NOTES  | PART NUMBER                 |
| SCALE        | 1:1        | B2400-B80                   |
| SHEET #      | 1 OF 1     |                             |

4

3

2

1