

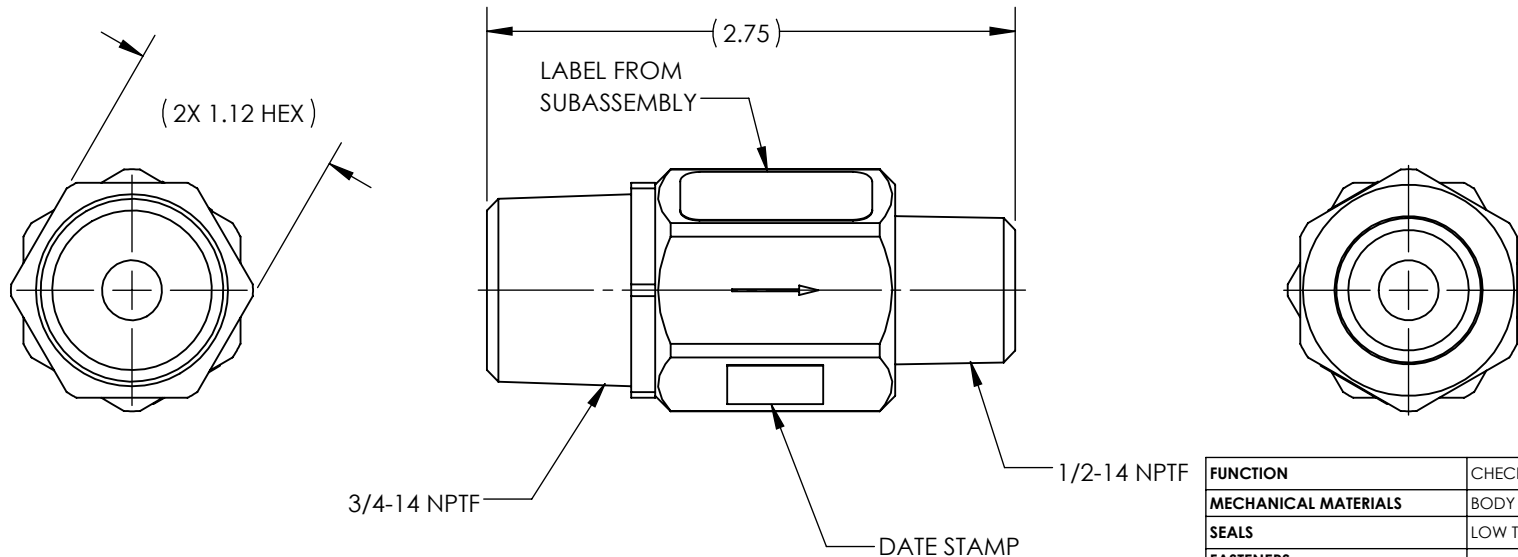
2

1

## NOTES:

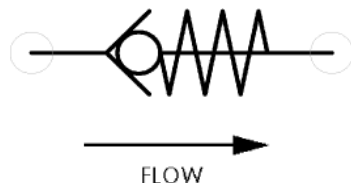
1. APPLICABLE STANDARDS/SPECIFICATIONS:  
ASME Y14.5M-1994, DIMENSIONING AND TOLERANCING  
ASME Y14.38-1999, ABBREVIATIONS
2. COMPONENT OR ITEM TO BE COMPLIANT WITH THE MOST  
CURRENT REVISION OF THE RoHS / Wee DIRECTIVE FOR  
THE REDUCTION OF HAZARDOUS SUBSTANCES AND MATERIALS.
3. ALL DIMENSIONS ARE FOR REFERENCE ONLY.
4. ENGINEERING REFERENCE: 5 PSI CRACKING PRESSURE
5. ITEM INDIVIDUALLY SEALED IN LABELED BAG.
6. ITEM IS RETAIL PACKED B2400-767.

REV	DATE	EC #	ZONE	DESCRIPTION	DRAWN	CKD
A	2020-09-28			ORIGINATED	NR	JMA



FUNCTION	CHECK VALVE
MECHANICAL MATERIALS	BODY AISI STEEL
SEALS	LOW TEMP. BUNA-N
FASTENERS	-
MTG STYLE	INLINE
ASSY LUBRICATION	HEAVY TRANSPORT SILICONE
FLOW	-
TEMP	-40 TO 180°F
FILTRATION	-
SYSTEM LUBRICATION REQ'D	N/A
PRESSURE RANGE	MIN:                      MAX: 150 psi
LEAK	-
ELECTRICAL VOLTAGE	N/A
CURRENT	N/A

## CUSTOMER PRINT



NOTE: PART MUST BE CLEAN AND BURR FREE  
MFG TOLERANCES UNLESS OTHERWISE NOTED:

ALL UNITS ARE INCHES  
(2) DECIMAL PLACES: ±.01  
(3) DECIMAL PLACES: ±.005

ANGLES: ±.5°

BREAK ALL EDGES .005/.015 X 45°

MACHINED SURFACES TO BE 63 RMS

CRITICAL CHARACTERISTIC - CONTROL

PLAN REQUIRED



Third Angle  
Projection

CONFIDENTIAL: THIS DRAWING OR  
ANY PART THEREOF IS PROPRIETARY  
AND MAY NOT BE REPRODUCED OR  
COPIED WITHOUT WRITTEN CONSENT  
OF AIRMAN PRODUCTS

DRAWN BY	NR	DESCRIPTION
DATE DRAWN	2020-09-28	CHECK VALVE ASSEMBLY
DRAWING SIZE	A	
MATERIAL	SEE NOTES	PART NUMBER
SCALE	1:1	
SHEET #	1 OF 1	B2400-B85

2

1