

4

3

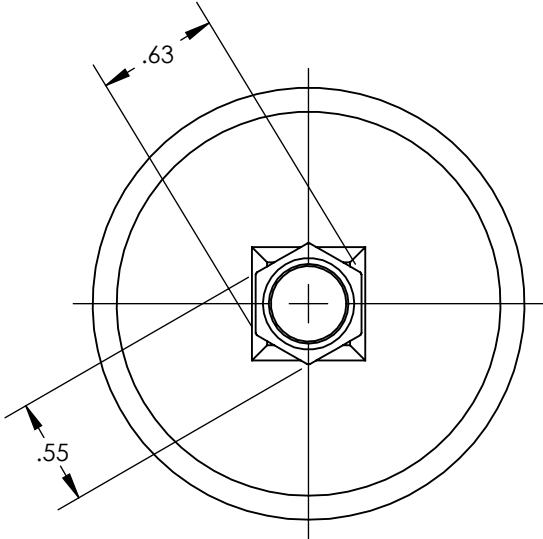
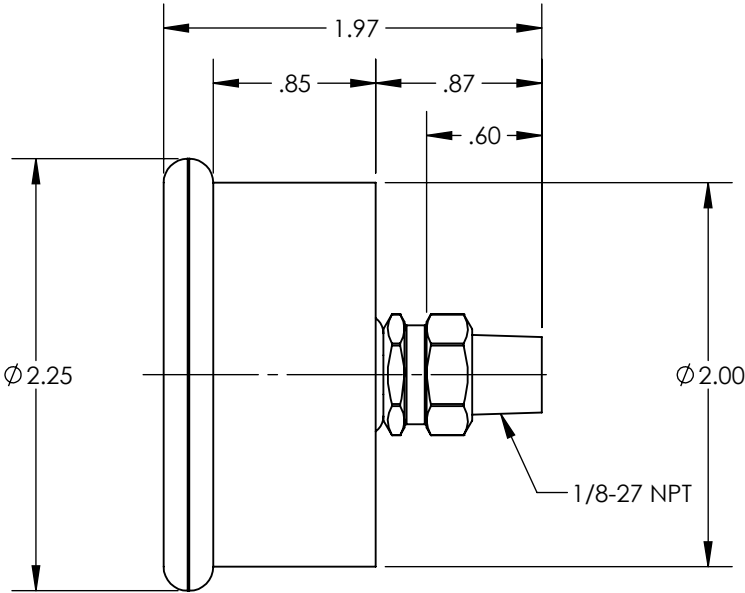
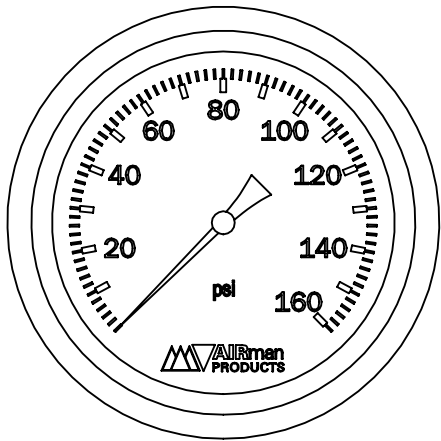
2

1

NOTES:


1. APPLICABLE STANDARDS/SPECIFICATIONS:  
ASME Y14.5M-1994, DIMENSIONING AND TOLERANCING  
ASME Y14.38-1999, ABBREVIATIONS
2. COMPONENT OR ITEM TO BE COMPLIANT WITH THE MOST  
CURRENT REVISION OF THE RoHS / Wee DIRECTIVE FOR  
THE REDUCTION OF HAZARDOUS SUBSTANCES AND MATERIALS.
3. MATERIAL:  
CASE: STAINLESS STEEL  
BOURDON TUBE AND SOCKET: BRASS  
LENS: ACRYLIC  
FILLING: SILICONE
4. PRESSURE RANGE: 0-160 PSI  
TEMP. RANGE: -40°C TO 60°C  
ACCURACY: ±3%
5. ALL DIMENSIONS ARE FOR REFERENCE ONLY
6. GAUGE SHIPS IN BOX. BOXED ITEM INDIVIDUALLY SEALED IN LABELED  
BAG.
7. ITEM IS RETAIL PACKED 7000-013

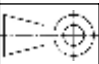
REV	DATE	EC #	ZONE	DESCRIPTION	DRAWN	CKD
A	2020-09-23			ORIGINATED	NR	JMA



CUSTOMER PRINT

NOTE: PART MUST BE CLEAN AND BURR FREE  
MFG TOLERANCES UNLESS OTHERWISE NOTED:  
ALL UNITS ARE INCHES  
(2) DECIMAL PLACES: ±.01  
(3) DECIMAL PLACES: ±.005  
ANGLES: ±.5°  
BREAK ALL EDGES .005/.015 X 45°  
MACHINED SURFACES TO BE 63 RMS  
CRITICAL CHARACTERISTIC - CONTROL  
PLAN REQUIRED





Third Angle  
Projection

CONFIDENTIAL: THIS DRAWING OR  
ANY PART THEREOF IS PROPRIETARY  
AND MAY NOT BE REPRODUCED OR  
COPIED WITHOUT WRITTEN CONSENT  
OF AIRMAN PRODUCTS

DRAWN BY	NR	DESCRIPTION
DRAWN DATE	2020-09-23	GAUGE, .13 NPT 2.00 DIAL 0-160 IN BAG
DRAWING SIZE	B	
MATERIAL	SEE NOTES	PART NUMBER
SCALE	1:1	K1100-353
SHEET #	1 OF 1	