

4

3

2

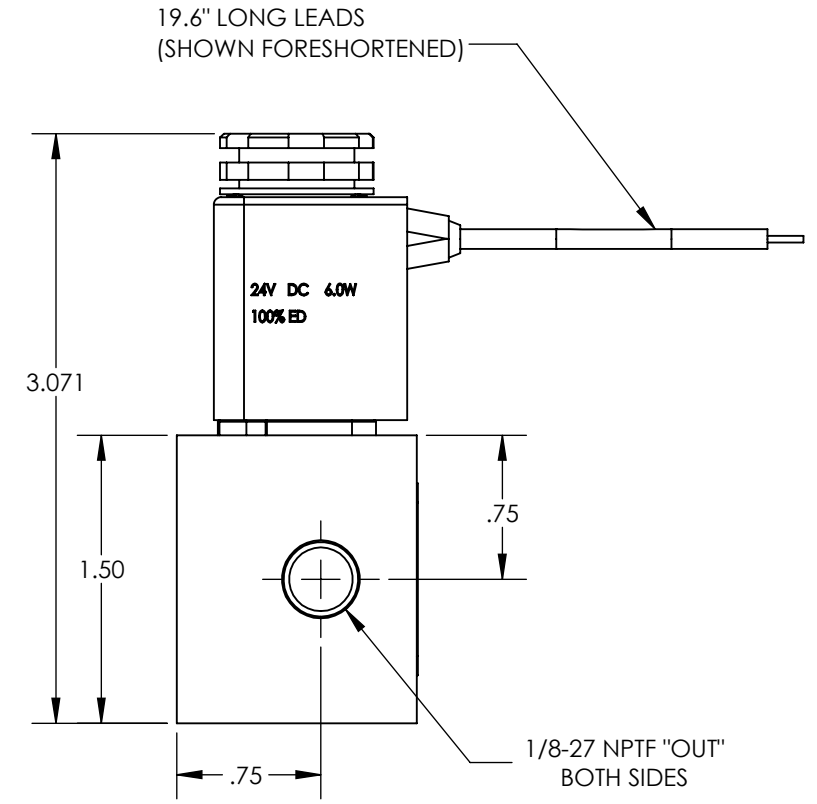
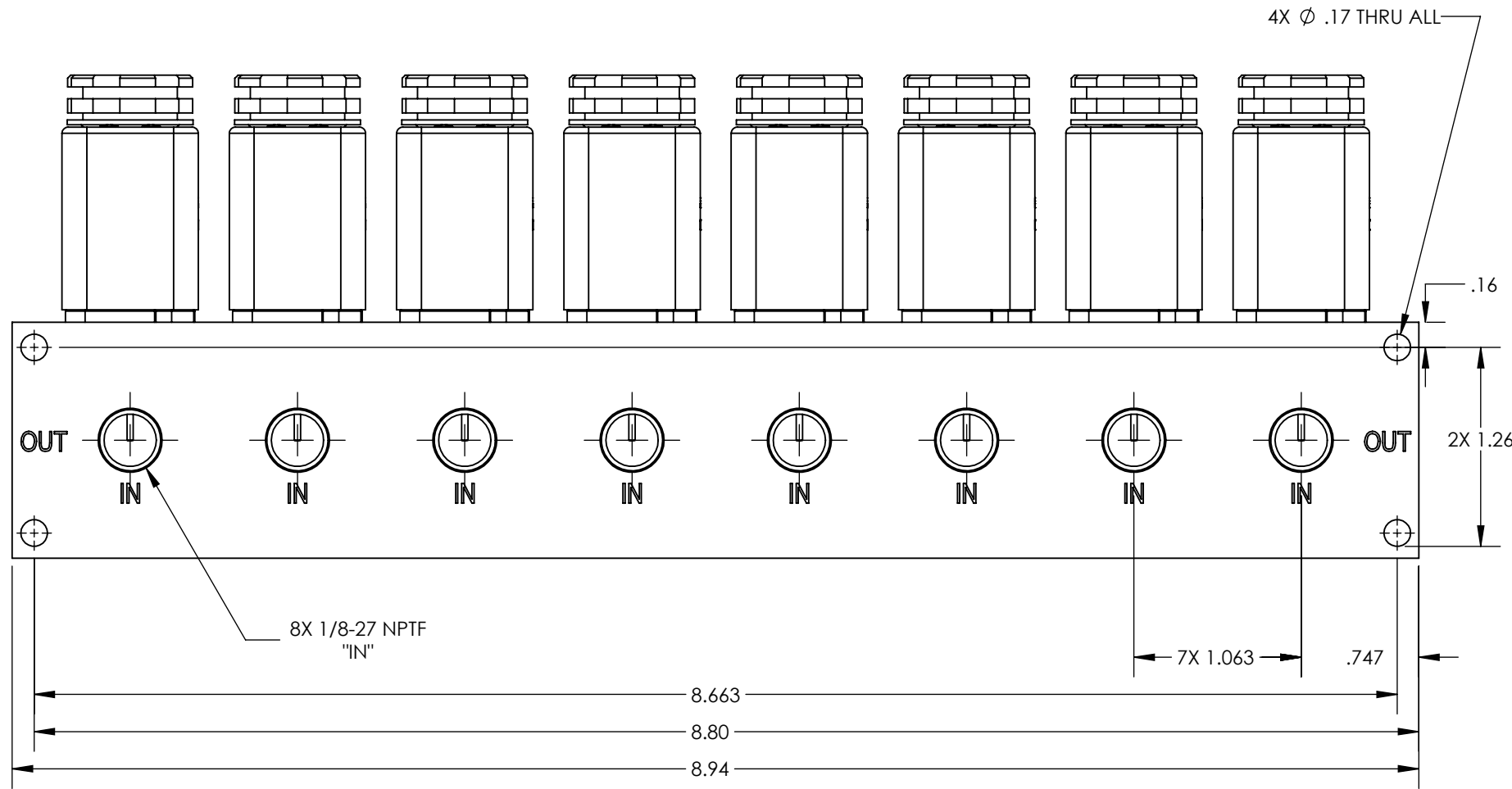
1

NOTES:

- 1. APPLICABLE STANDARDS/SPECIFICATIONS:
ASME Y14.5M-1994, DIMENSIONING AND TOLERANCING
ASME Y14.38-1999, ABBREVIATIONS
- 2. COMPONENT OR ITEM TO BE COMPLIANT WITH THE MOST CURRENT REVISION OF THE RoHS / Wee DIRECTIVE FOR THE REDUCTION OF HAZARDOUS SUBSTANCES AND MATERIALS.
- 3. ALL DIMENSIONS ARE FOR REFERENCE ONLY.
- 4. NOTES:
CLEANED TO BREATHABLE CIRCUIT GAS STANDARDS.
COIL INSULATION IS CLAFF F (155° C)
REFERENCE: SIMILAR TO THE 4 STATION B2400-604-4-DB

REV	DATE	EC #	ZONE	DESCRIPTION	DRAWN	CKD
A	2017-07-21			ORIGINATED	SM	
A1	2008-10-16			ADDED COIL NOMENCLATURE CALL OUT TO CUSTOMER DATA SHEET	JRK	
A2	2022-02-28			SW RELEASE, SEPARATE CONFIGURATIONS MOVED TO UNIQUE DRAWINGS	NR	JMA

B



B

A

FUNCTION	2WAY NORMALLY CLOSED 8 STATION MANIFOLD
MECHANICAL MATERIALS	CLEAR ANODIZED ALUMINUM MANIFOLD, SS SOLENOID VALVE STEM
SEALS	VITON
FASTENERS	STAINLESS STEEL
MTG STYLE	SIDE / TOP MOUNT
ASSY LUBRICATION	N/A
FLOW	.059" Ø ORIFICE (1.5MM)
TEMP	-20° TO 125°F
FILTRATION	N/A
SYSTEM LUBRICATION REQ'D	N/A
PRESSURE RANGE	MIN: VAC MAX: 150 psi
LEAK	< 10sccm @ 120 psi
ELECTRICAL VOLTAGE	24 ± 5% VDC
CURRENT	6W PER STATION

A

CUSTOMER PRINT

NOTE: PART MUST BE CLEAN AND BURR FREE
MFG TOLERANCES UNLESS OTHERWISE NOTED:
ALL UNITS ARE INCHES
(2) DECIMAL PLACES: ±.01
(3) DECIMAL PLACES: ±.005
ANGLES: ±.5°
BREAK ALL EDGES .005/.015 X 45°
MACHINED SURFACES TO BE 63 RMS
CRITICAL CHARACTERISTIC - CONTROL PLAN REQUIRED



CONFIDENTIAL: THIS DRAWING OR ANY PART THEREOF IS PROPRIETARY AND MAY NOT BE REPRODUCED OR COPIED WITHOUT WRITTEN CONSENT OF AIRMAN PRODUCTS

DRAWN BY	SM	DESCRIPTION
DRAWN DATE	2017-06-05	8 STATION MANIFOLD, 2W NORMALLY CLOSED
DRAWING SIZE	B	PART NUMBER
MATERIAL	SEE NOTES	B2400-604-8-DB
SCALE	1:1	
SHEET #	1 OF 1	

4

3

2

1