

4

3

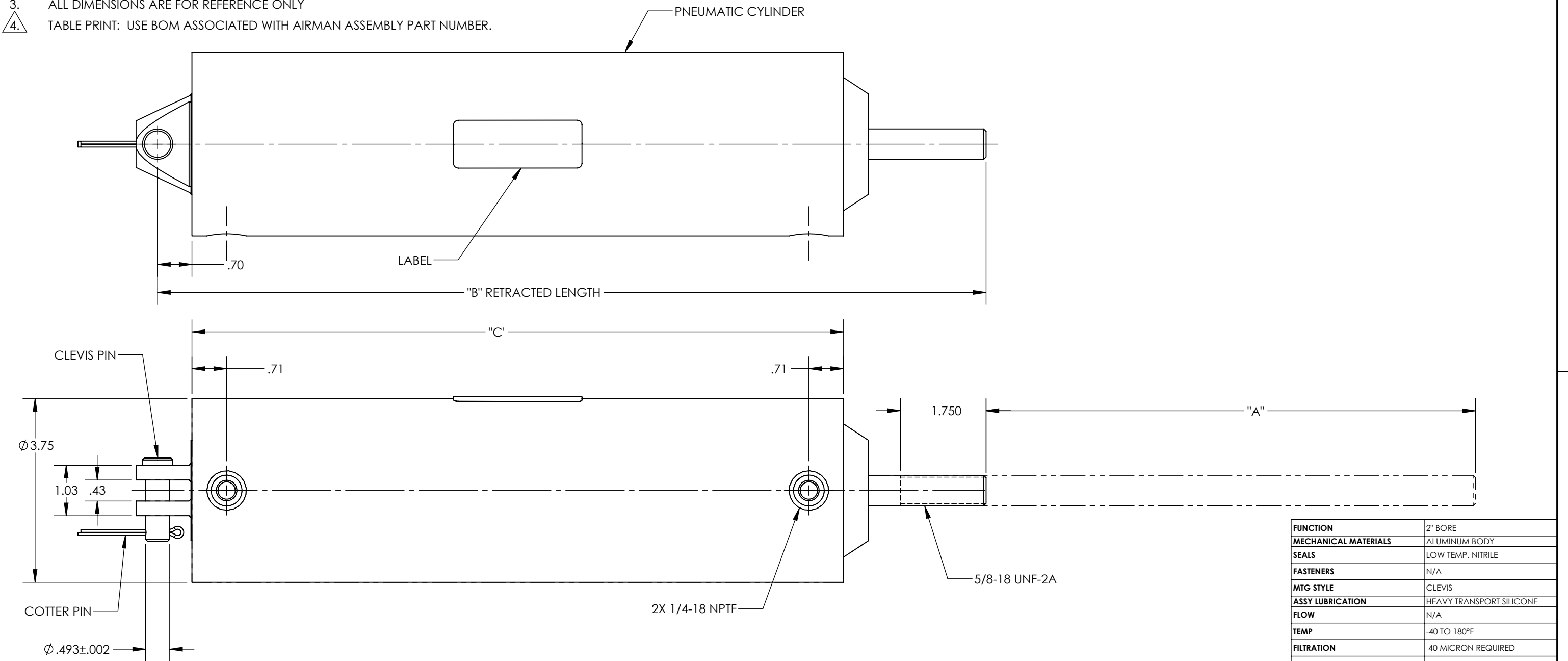
2

1

NOTES:

1. APPLICABLE STANDARDS/SPECIFICATIONS:
ASME Y14.5M-1994, DIMENSIONING AND TOLERANCING
ASME Y14.38-1999, ABBREVIATIONS
2. COMPONENT OR ITEM TO BE COMPLIANT WITH THE MOST
CURRENT REVISION OF THE RoHS / Wee DIRECTIVE FOR
THE REDUCTION OF HAZARDOUS SUBSTANCES AND MATERIALS.
3. ALL DIMENSIONS ARE FOR REFERENCE ONLY
4. TABLE PRINT: USE BOM ASSOCIATED WITH AIRMAN ASSEMBLY PART NUMBER.

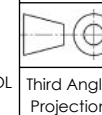
REV	DATE	EC #	ZONE	DESCRIPTION	DRAWN	CKD
A	2109-04-12			ORIGINATED	MJO	CED



FUNCTION	2" BORE
MECHANICAL MATERIALS	ALUMINUM BODY
SEALS	LOW TEMP. NITRILE
FASTENERS	N/A
MTG STYLE	CLEVIS
ASSY LUBRICATION	HEAVY TRANSPORT SILICONE
FLOW	N/A
TEMP	-40 TO 180°F
FILTRATION	40 MICRON REQUIRED
SYSTEM LUBRICATION REQ'D	N/A
PRESSURE RANGE	MIN: 0 psi MAX: 150 psi PILOT: N/A
LEAK	N/A
ELECTRICAL VOLTAGE	N/A
CURRENT	N/A

CUSTOMER PRINT

NOTE: PART MUST BE CLEAN AND BURR FREE
MFG TOLERANCES UNLESS OTHERWISE NOTED:
ALL UNITS ARE INCHES
(2) DECIMAL PLACES: ±.01
(3) DECIMAL PLACES: ±.005
ANGLES: ±.5°
BREAK ALL EDGES .005/.015 X 45°
MACHINED SURFACES TO BE 63 RMS
CRITICAL CHARACTERISTIC - CONTROL
PLAN REQUIRED



CONFIDENTIAL: THIS DRAWING OR
ANY PART THEREOF IS PROPRIETARY
AND MAY NOT BE REPRODUCED OR
COPIED WITHOUT WRITTEN CONSENT
OF AIRMAN PRODUCTS

DRAWN BY	MJO	DESCRIPTION
DRAWN DATE	2019-04-12	CYLINDER, RND, 3.50 BORE X 10.00 STROKE
DRAWING SIZE	B	
MATERIAL	SEE NOTES	PART NUMBER
SCALE	1:2	RCB3.50 X 10.00
SHEET #	1 OF 1	

4

ASSEMBLY P/N	LENGTH			ROD STATE (SPRING)	SPRING FORCE IN EXTENDED STATE (PRESSURE)	SPRING FORCE IN RETRACTED STATE (PRESSURE)
	"A"	"B"	"C"			
RCB3.50X10.00	10.00	16.93	13.30	NONE	N/A	N/A

4

3

2

1