

4

3

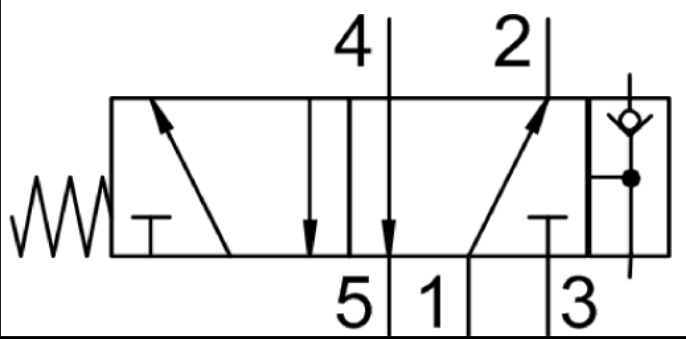
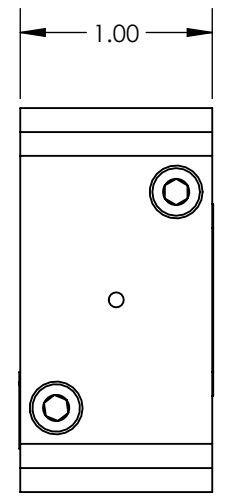
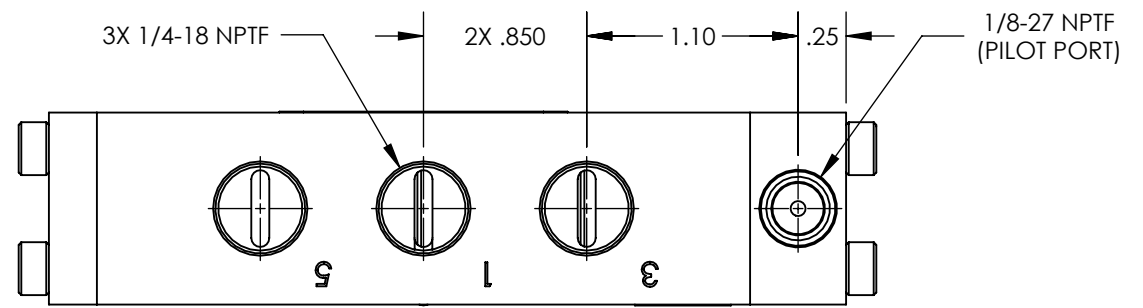
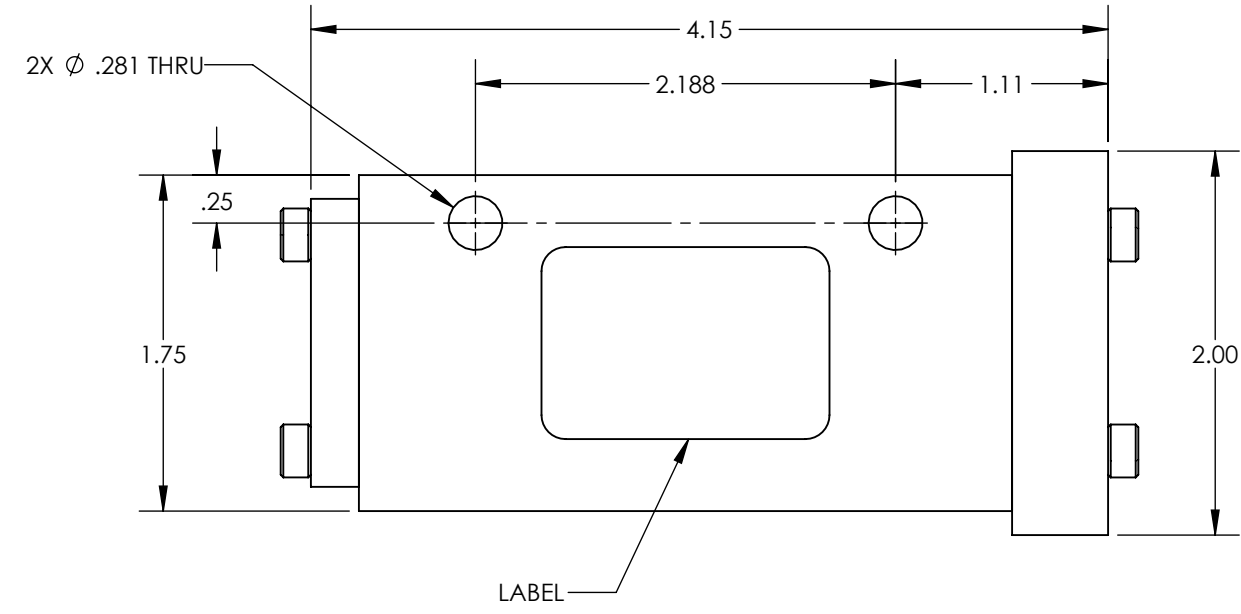
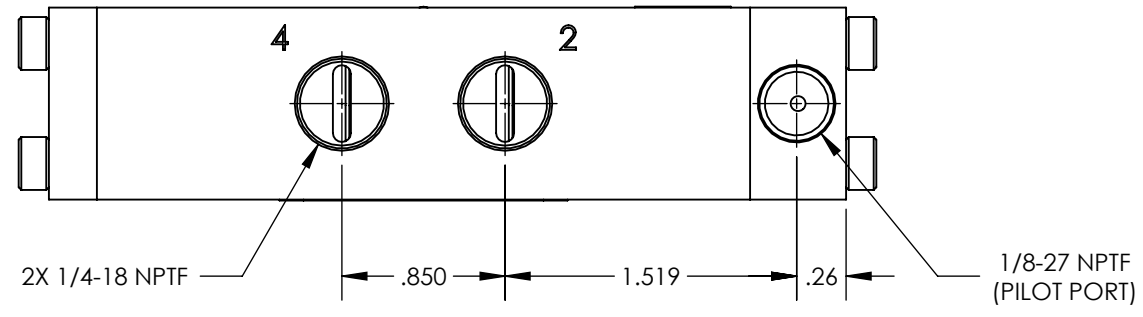
2

1

NOTES:

- 1. APPLICABLE STANDARDS/SPECIFICATIONS:
ASME Y14.5M-1994, DIMENSIONING AND TOLERANCING
ASME Y14.38-1999, ABBREVIATIONS
- 2. COMPONENT OR ITEM TO BE COMPLIANT WITH THE MOST CURRENT REVISION OF THE RoHS / Wee DIRECTIVE FOR THE REDUCTION OF HAZARDOUS SUBSTANCES AND MATERIALS.
- 3. ALL DIMENSIONS ARE FOR REFERENCE ONLY.
- 4. TABLE PRINT: USE BOM ASSOCIATED WITH AIRMAN ASSEMBLY PART NUMBER. SUFFIXES (EXAMPLES -CLR AND -BLK) ATTACHED TO THE END OF THE AIRMAN PART NUMBER WILL INDICATE THE COLUMN TO USE, NO SUFFIX USE THE QTY COLUMN. ITEM INDIVIDUALLY SEALED IN BAG.

REV	DATE	EC #	ZONE	DESCRIPTION	DRAWN	CKD
A	2021-11-12			ORIGINATED	NR	JMA



FUNCTION	5/2 SHUTTLE AIR PILOT/SPRING RETURN
MECHANICAL MATERIALS	ALUM. BODY & END CAP
SEALS	LOW TEMP. NITRILE, LOW COMP. SET POLYURETHANE
FASTENERS	STAINLESS STEEL
MTG STYLE	BODY SIDE
ASSY LUBRICATION	HEAVY TRANSPORT SILICONE
FLOW	1.5 Cv
TEMP	-40 TO 180°F
FILTRATION	40 MICRON
SYSTEM LUBRICATION REQ'D	N/A
PRESSURE RANGE	MIN. VAC MAX. 150psi MIN. 55psi PILOT PRESSURE
LEAK	N/A
ELECTRICAL VOLTAGE	N/A
CURRENT	N/A

CUSTOMER PRINT

AIRman PART NUMBER CHART	
AIRman PART NUMBER	ANODIZATION COLOR
V250070512	NON-ANODIZED
V250070512-BLK	BLACK-ANODIZED
V250070512-CLR	CLEAR-ANODIZED

NOTE: PART MUST BE CLEAN AND BURR FREE MFG TOLERANCES UNLESS OTHERWISE NOTED:
 ALL UNITS ARE INCHES
 (2) DECIMAL PLACES: ±.01
 (3) DECIMAL PLACES: ±.005
 ANGLES: ±.5°
 BREAK ALL EDGES .005/.015 X 45°
 MACHINED SURFACES TO BE 63 RMS
 CRITICAL CHARACTERISTIC - CONTROL PLAN REQUIRED

AIRman
PRODUCTS

Third Angle Projection

CONFIDENTIAL: THIS DRAWING OR ANY PART THEREOF IS PROPRIETARY AND MAY NOT BE REPRODUCED OR COPIED WITHOUT WRITTEN CONSENT OF AIRMAN PRODUCTS

DRAWN BY	NR	DESCRIPTION
DRAWN DATE	2021-10-28	VALVE, .25 NPT, 5-2, SAP-SR
DRAWING SIZE	B	PART NUMBER
MATERIAL	SEE NOTES	V250070512
SCALE	1:1	
SHEET #	1 OF 1	

4

3

2

1