

4

3

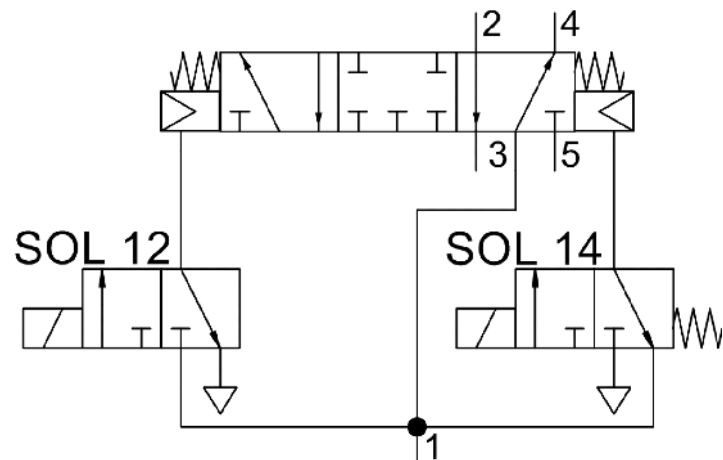
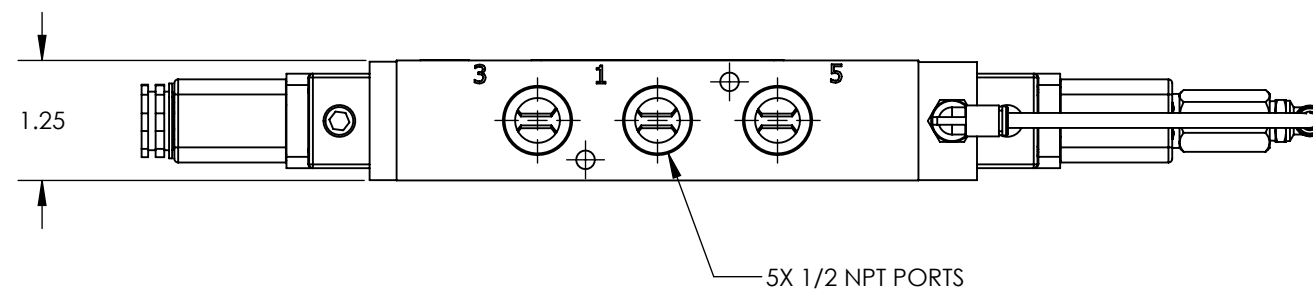
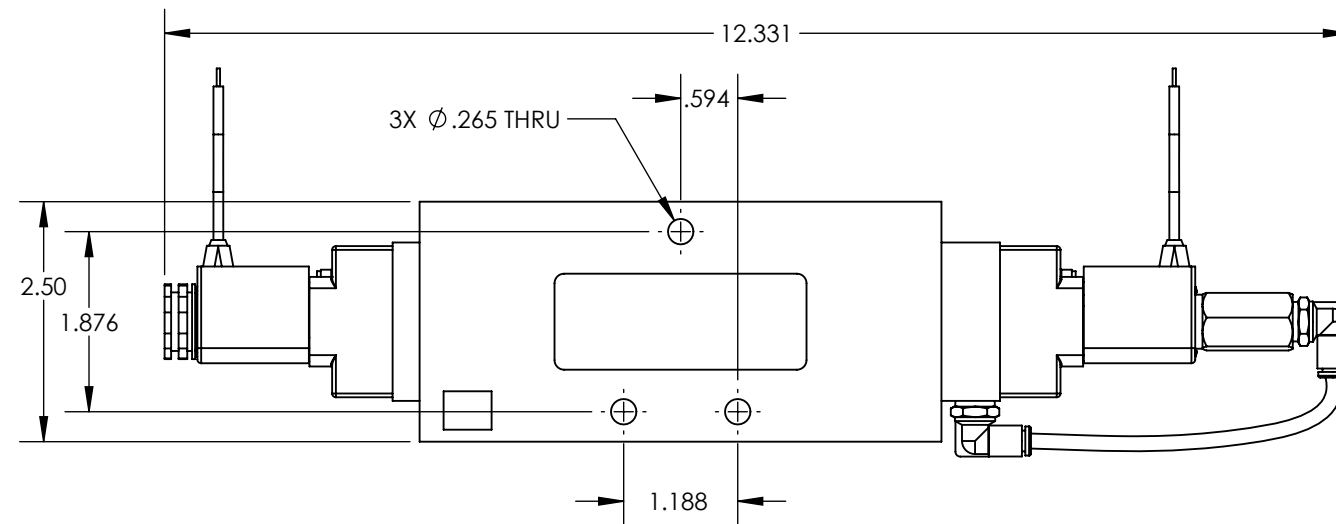
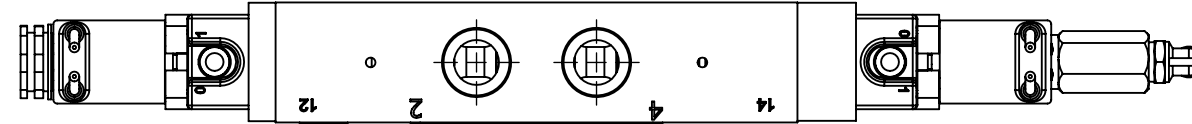
2

1

NOTES:

- 1. APPLICABLE STANDARDS/SPECIFICATIONS:
ASME Y14.5M-1994, DIMENSIONING AND TOLERANCING
ASME Y14.38-1999, ABBREVIATIONS
- 2. COMPONENT OR ITEM TO BE COMPLIANT WITH THE MOST CURRENT REVISION OF THE RoHS / Wee DIRECTIVE FOR THE REDUCTION OF HAZARDOUS SUBSTANCES AND MATERIALS.
- 3. ALL DIMENSIONS ARE FOR REFERENCE ONLY

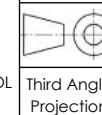
REV	DATE	EC #	ZONE	DESCRIPTION	DRAWN	CKD
A	2007-06-20			ORIGINATED	DC	
A1	2022-02-18			SW RELEASE	NR	JMA



MECHANICAL MATERIALS	BLUE ANODIZED ALUMINUM BODY, BLACK ANODIZED ALUM END CAPS.
SEALS	LOW TEMP. NITRILE
FUNCTION	5/3 VALVE BLOCKED CENTER, DOUBLE SOLENOID, SPRING CENTER WITH 14 SIDE ENERGIZED
FASTENERS	STAINLESS STEEL
MTG STYLE	BODY SIDE MOUNT THRU
ASSY LUBRICATION	HEAVY TRANSPORT SILICONE
FLOW	4.4 Cv
TEMP	0 TO 180°F
FILTRATION	40 MICRON RECOMMENDED
SYSTEM LUBRICATION REQ'D	N/A
PRESSURE RANGE	MIN: 55 PSI MAX: 150 PSI
LEAK	< 20 SCCM @ 120 PSI
ELECTRICAL VOLTAGE	12 ± 5% VDC
CURRENT	5W

CUSTOMER PRINT

NOTE: PART MUST BE CLEAN AND BURR FREE
MFG TOLERANCES UNLESS OTHERWISE NOTED:
ALL UNITS ARE INCHES
(2) DECIMAL PLACES: ±.01
(3) DECIMAL PLACES: ±.005
ANGLES: ±.5°
BREAK ALL EDGES .005/.015 X 45°
MACHINED SURFACES TO BE 63 RMS
CRITICAL CHARACTERISTIC - CONTROL PLAN REQUIRED



CONFIDENTIAL: THIS DRAWING OR ANY PART THEREOF IS PROPRIETARY AND MAY NOT BE REPRODUCED OR COPIED WITHOUT WRITTEN CONSENT OF AIRMAN PRODUCTS

DRAWN BY	JMA	DESCRIPTION
DRAWN DATE	YYYY-MM-DD	VALVE, CUSTOM, .5 NPT, 5-3, SOL-SOL, BC
DRAWING SIZE	B	
MATERIAL	SEE NOTES	PART NUMBER
SCALE	1:2	B2400-378
SHEET #	1 OF 1	

4

3

2

1

B

B

A

A