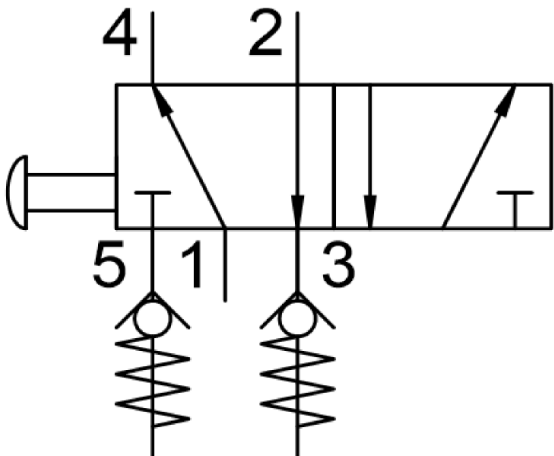
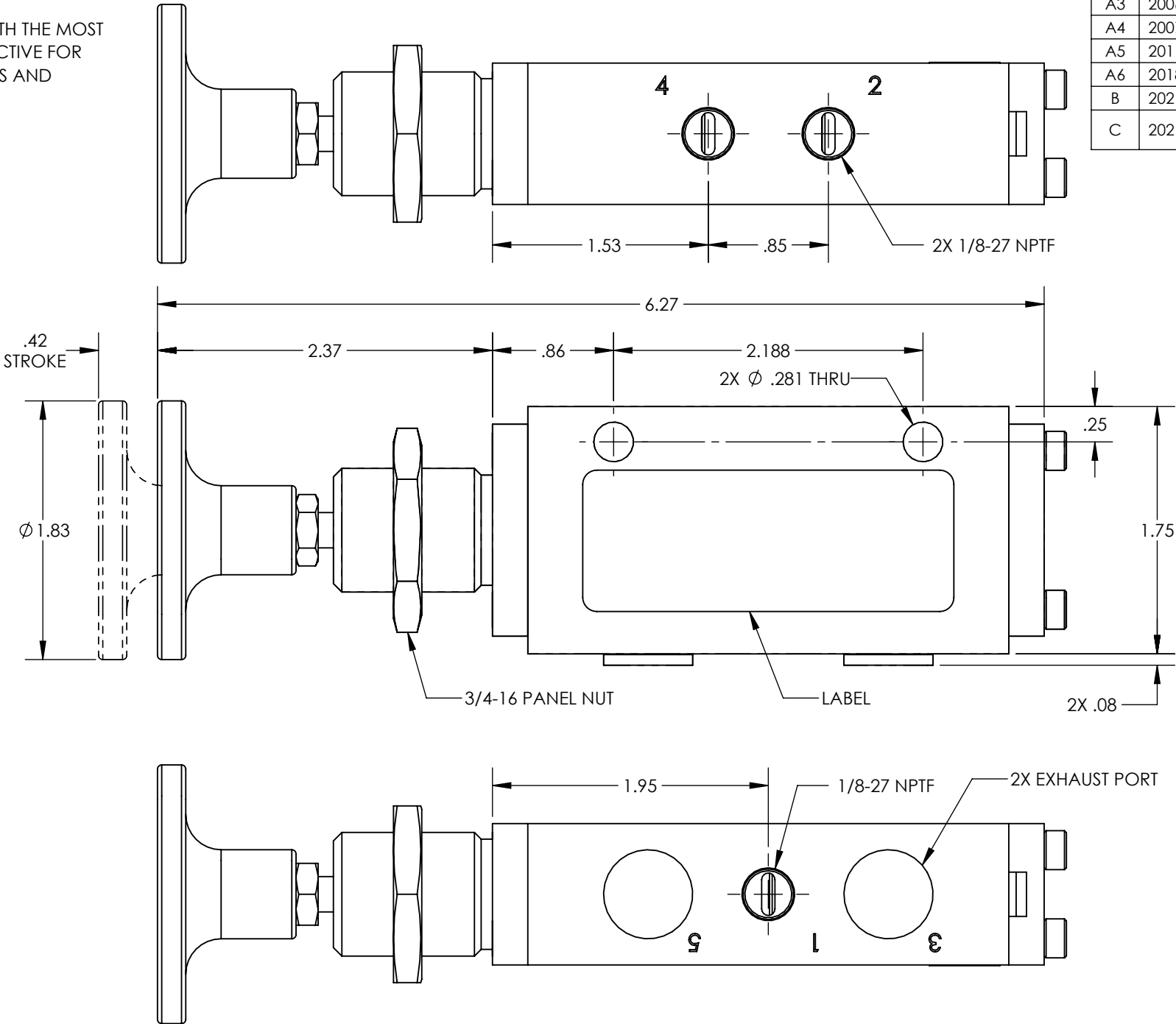
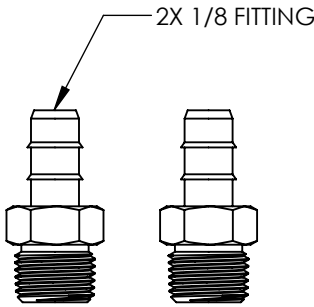


- NOTES:
1. APPLICABLE STANDARDS/SPECIFICATIONS:  
ASME Y14.5M-1994, DIMENSIONING AND TOLERANCING  
ASME Y14.38-1999, ABBREVIATIONS
  2. COMPONENT OR ITEM TO BE COMPLIANT WITH THE MOST  
CURRENT REVISION OF THE RoHS / Wee DIRECTIVE FOR  
THE REDUCTION OF HAZARDOUS SUBSTANCES AND  
MATERIALS.
  3. ALL DIMENSIONS ARE FOR REFERENCE ONLY.
  4. ITEMS INDIVIDUALLY SEALED IN BAG.

REV	DATE	EC #	ZONE	DESCRIPTION	DRAWN	CKD
A	2006-05-12			ORIGINATED	DC	CED
A1	2006-06-27			UPDATED DRAWING	DC	
A2	2006-07-12			UPDATED DRAWING	DC	
A3	2006-11-08	1046		ADDED FILTERED VENT ON BLIND END CAP	DC	
A4	2007-06-29	1105		7/8-16 WAS 3/4-16	DC	
A5	2011-08-23	1286		ADDED BARB FITTINGS	DC	
A6	2018-03-01			REMOVED ENGRAVED LOGO	MJO	
B	2021-09-02	2269		REDRAWN IN SW	NR	CED
C	2021-11-10	2281		UPDATED SUB-STRUCTURE AND ANODIZE BODY AND CAPS	NR	JMA



FUNCTION	5/2 PUSH/PULL W/ EXH CHECK VALVES
MECHANICAL MATERIALS	CLEAR ANODIZED ALUMINUM BODY & END CAP
SEALS	LOW TEMP. NITRILE, LOW COMP. SET POLYURETHANE
FASTENERS	STAINLESS STEEL
MTG STYLE	BODY SIDE
ASSY LUBRICATION	HEAVY TRANSPORT SILICONE
FLOW	0.4 Cv
TEMP	-40 TO 180°F
FILTRATION	40 MICRON
SYSTEM LUBRICATION REQ'D	N/A
PRESSURE RANGE	MIN: VAC. MAX: 150 psi
LEAK	N/A
ELECTRICAL VOLTAGE	N/A
CURRENT	N/A

## CUSTOMER PRINT

NOTE: PART MUST BE CLEAN AND BURR FREE  
MFG TOLERANCES UNLESS OTHERWISE NOTED:  
ALL UNITS ARE INCHES  
(2) DECIMAL PLACES: ±.01  
(3) DECIMAL PLACES: ±.005  
ANGLES: ±.5°  
BREAK ALL EDGES .005/.015 X 45°  
MACHINED SURFACES TO BE 63 RMS  
CRITICAL CHARACTERISTIC - CONTROL  
PLAN REQUIRED



CONFIDENTIAL: THIS DRAWING OR ANY PART THEREOF IS PROPRIETARY AND MAY NOT BE REPRODUCED OR COPIED WITHOUT WRITTEN CONSENT OF AIRMAN PRODUCTS

DRAWN BY	DC	DESCRIPTION
DRAWN DATE	2006-05-12	VALVE, .13 NPT, 5-2, PP-SD W-EXH MFLRS
DRAWING SIZE	B	
MATERIAL	SEE NOTES	PART NUMBER
SCALE	1:1	
SHEET #	1 OF 1	B2400-628