

4

3

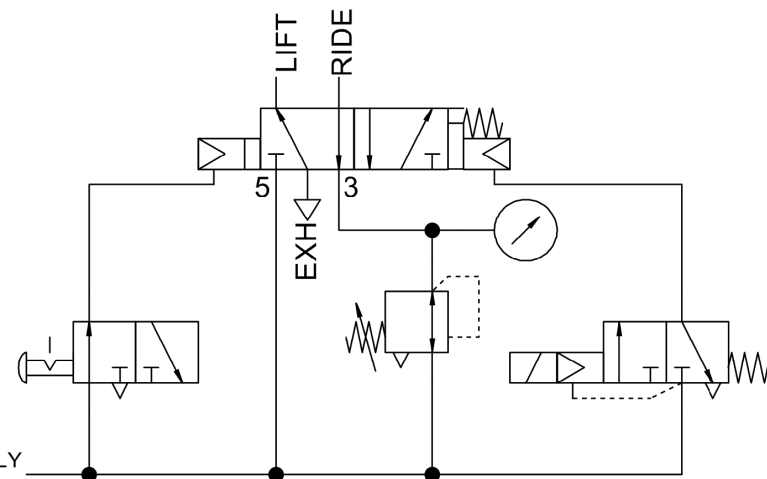
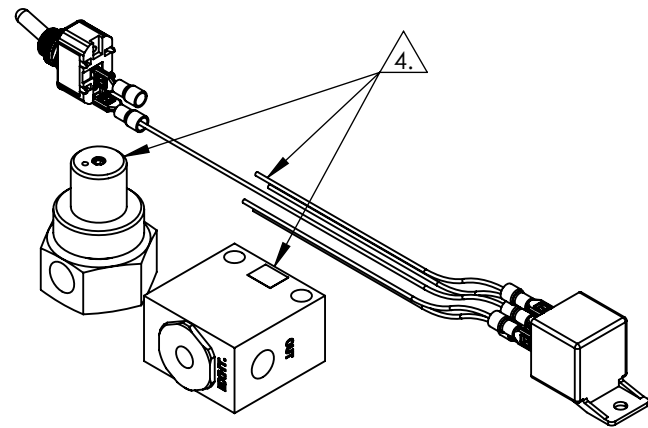
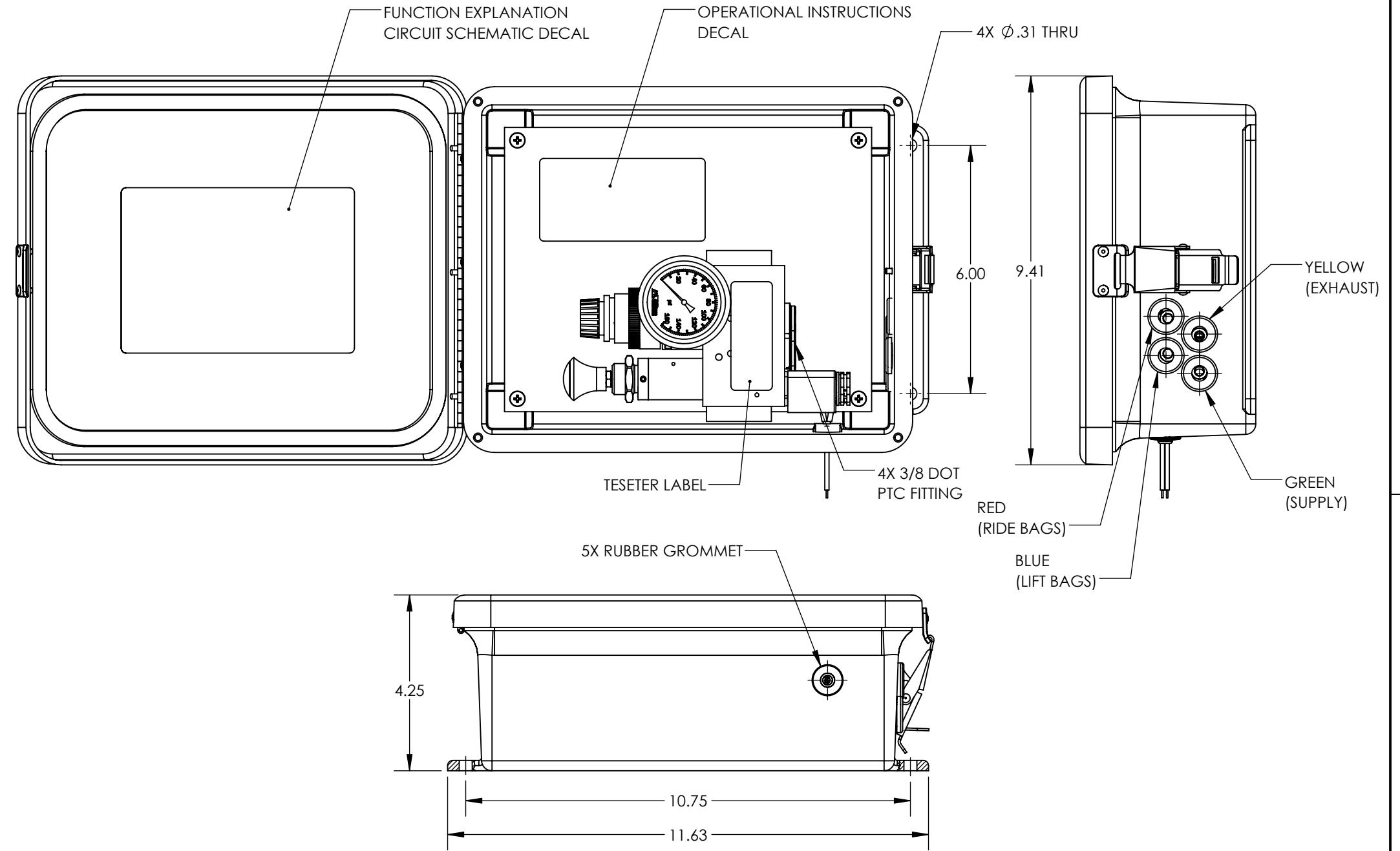
2

1

NOTES:

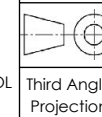
- 1. APPLICABLE STANDARDS/SPECIFICATIONS:  
ASME Y14.5M-1994, DIMENSIONING AND TOLERANCING  
ASME Y14.38-1999, ABBREVIATIONS
- 2. COMPONENT OR ITEM TO BE COMPLIANT WITH THE MOST CURRENT REVISION OF THE RoHS / Wee DIRECTIVE FOR THE REDUCTION OF HAZARDOUS SUBSTANCES AND MATERIALS.
- 3. ALL DIMENSIONS ARE FOR REFERENCE ONLY
- 4. SHIPS WITH P/N: K1100-162, PP2-70, QR-2, 3000-012 WITH ASSEMBLY IN BOX.

REV	DATE	EC #	ZONE	DESCRIPTION	DRAWN	CKD
A	2020-09-11			ORIGINATED	NR	JMA
A1	2020-09-21			REMOVED B6000-203 IN-LINE FILTER UPDATE LABEL SIZES	NR	JMA
A2	2021-08-10			ADD TESTER LABEL	JMA	



# CUSTOMER PRINT

NOTE: PART MUST BE CLEAN AND BURR FREE  
MFG TOLERANCES UNLESS OTHERWISE NOTED:  
ALL UNITS ARE INCHES  
(2) DECIMAL PLACES: ±.01  
(3) DECIMAL PLACES: ±.005  
ANGLES: ±.5°  
BREAK ALL EDGES .005/.015 X 45°  
MACHINED SURFACES TO BE 63 RMS  
CRITICAL CHARACTERISTIC - CONTROL  
PLAN REQUIRED



CONFIDENTIAL: THIS DRAWING OR ANY PART THEREOF IS PROPRIETARY AND MAY NOT BE REPRODUCED OR COPIED WITHOUT WRITTEN CONSENT OF AIRMAN PRODUCTS

DRAWN BY	NR	DESCRIPTION
DRAWN DATE	2020-09-11	ENCLOSURE, (UCO) LIFT AXLE KIT
DRAWING SIZE	B	
MATERIAL	SEE NOTES	PART NUMBER
SCALE	1:3	B5000-205
SHEET #	1 OF 1	

4

3

2

1

B

B

A

A