

4

3

2

1

PART NUMBER	CYLINDER STROKE	DIM "A"	DIM "B"	DIM "C"
TR2.50 X 6.00	6.00" STROKE	11.50	8.60	10.49
TR2.50 X 8.00	8.00" STROKE	13.50	10.60	12.49

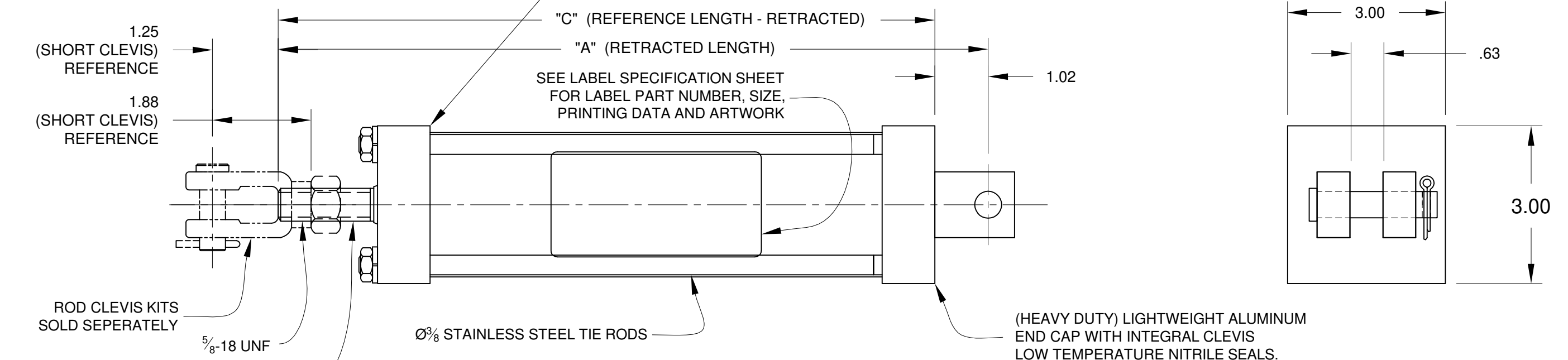
REV	DATE	ECN #	ZONE	DESCRIPTION	BY	CHKD
A	FEB 13 2009		N/A	ORIGINATED - INITIAL RELEASE	JRK	N/A
B	JUN 07 2017	1918	N/A	REDRAWN - 6.00" & 8.00" STROKE COMBINED		
				ROD CLEVIS SEPERATED FROM CYL TO A KIT	MWH	CD
B1	2023-06-06			FIX THREAD CALLOUT	CED	

(HEAVY DUTY) LIGHTWEIGHT ALUMINUM HEAD CAP WITH OIL IMPREGNATED BRONZE ROD BEARING, NITRILE ROD WIPER AND LOW TEMPERATURE NITRILE SEALS.

NOTE: ADD STROKE TO DIM'S A AND C FOR EXTENDED LENGTH

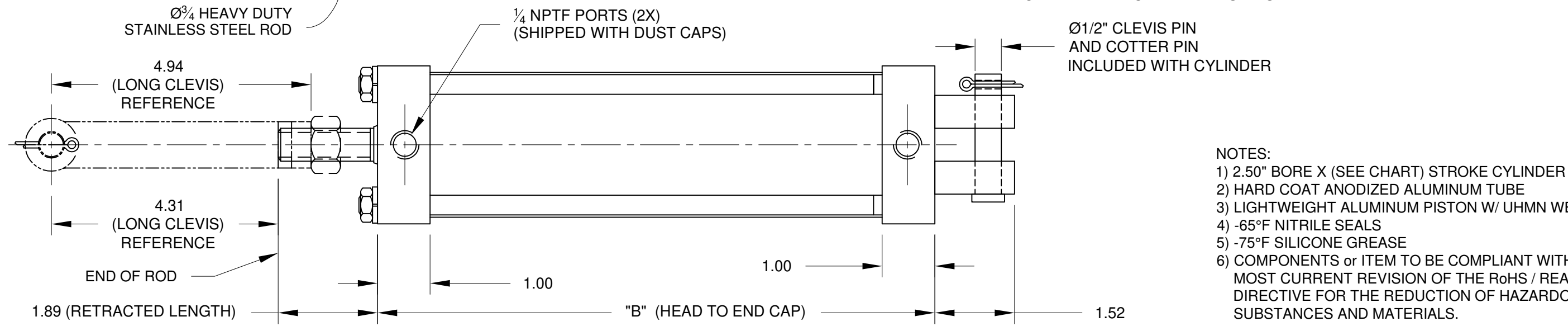
B

B



A

A



- NOTES:
- 1) 2.50" BORE X (SEE CHART) STROKE CYLINDER
 - 2) HARD COAT ANODIZED ALUMINUM TUBE
 - 3) LIGHTWEIGHT ALUMINUM PISTON W/ UHMN WEAR BAND
 - 4) -65°F NITRILE SEALS
 - 5) -75°F SILICONE GREASE
 - 6) COMPONENTS or ITEM TO BE COMPLIANT WITH THE MOST CURRENT REVISION OF THE RoHS / REACH / Wee DIRECTIVE FOR THE REDUCTION OF HAZARDOUS SUBSTANCES AND MATERIALS.

NOTE: PART MUST BE CLEAN AND BURR FREE
MFG TOLERANCES UNLESS OTHERWISE NOTED:
ALL UNITS ARE INCHES
(2) DECIMAL PLACES: ±.01
(3) DECIMAL PLACES: ±.005
ANGLES: ±5°
BREAK ALL EDGES .005/.015 X 45°
MACHINED SURFACES TO BE 63 RMS
CRITICAL CHARACTERISTIC - CONTROL PLAN REQUIRED

CONFIDENTIAL: THIS DRAWING OR ANY PART THEREOF IS PROPRIETARY AND MAY NOT BE REPRODUCED OR COPIED WITHOUT WRITTEN CONSENT OF AIRMAN PRODUCTS

Third Angle Projection

DRAWN BY	MWH	DESCRIPTION
DATE DRAWN	05/18/2017	2.50 BORE X (STROKE) CYLINDER
CHECKED BY	CD	
DATE CHECKED	05/18/2017	PART NUMBER
DRAWING SIZE	B	
MATERIAL	SEE NOTES	TR2.50 X STROKE
SCALE	1:2	
SHEET #	1 OF 1	

4

3

2

1