

4

3

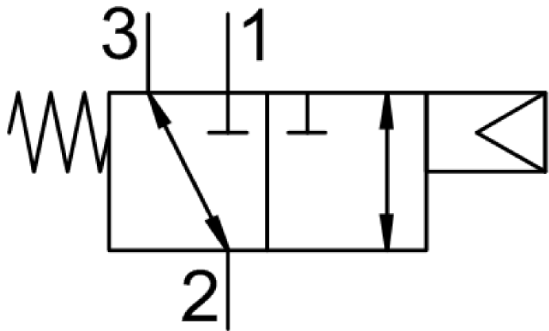
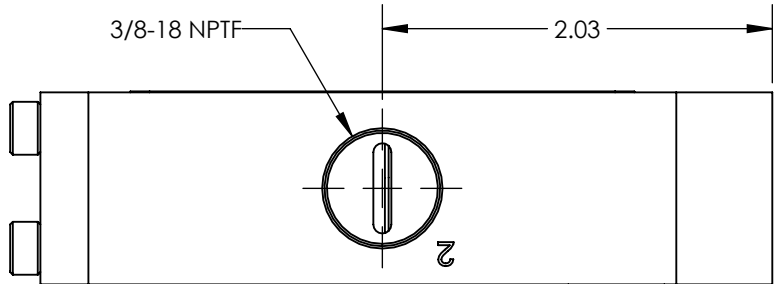
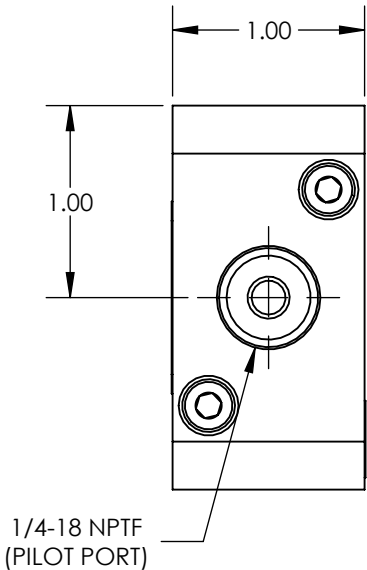
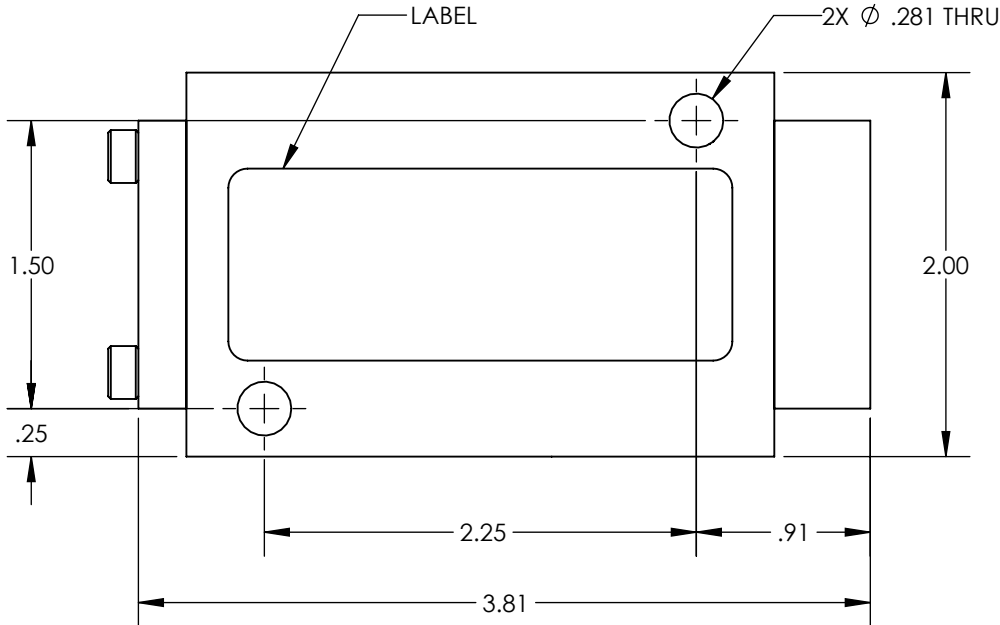
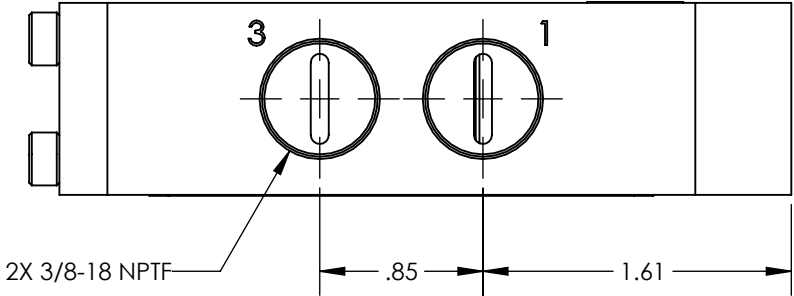
2

1

NOTES:

1. APPLICABLE STANDARDS/SPECIFICATIONS:  
ASME Y14.5M-1994, DIMENSIONING AND TOLERANCING  
ASME Y14.38-1999, ABBREVIATIONS
2. COMPONENT OR ITEM TO BE COMPLIANT WITH THE MOST  
CURRENT REVISION OF THE RoHS / Wee DIRECTIVE FOR  
THE REDUCTION OF HAZARDOUS SUBSTANCES AND MATERIALS.
3. ALL DIMENSIONS ARE FOR REFERENCE ONLY.
4. TABLE PRINT: USE BOM ASSOCIATED WITH AIRMAN ASSEMBLY  
PART NUMBER. SUFFIXES (EXAMPLES -CLR AND -BLK) ATTACHED  
TO THE END OF THE AIRMAN PART NUMBER WILL INDICATE THE  
COLUMN TO USE, NO SUFFIX USE THE QTY COLUMN.
5. ITEM INDIVIDUALLY SEALED IN BAG.

REV	DATE	EC #	ZONE	DESCRIPTION	DRAWN	CKD
A	2019-11-13			ORIGINATED	NR	CED
B	2021-06-14	2259		ADDED BAG	NR	JMA




FUNCTION	3/2 AIR PILOT/SPRING RESET
MECHANICAL MATERIALS	ALUM. BODY & END CAP
SEALS	LOW TEMP. NITRILE, LOW COMP. SET POLYURETHANE
FASTENERS	STAINLESS STEEL
MTG STYLE	BODY SIDE
ASSY LUBRICATION	HEAVY TRANSPORT SILICONE
FLOW	2.2 Cv
TEMP	-40 TO 180°F
FILTRATION	40 MICRON
SYSTEM LUBRICATION REQ'D	N/A
PRESSURE RANGE	MIN. VAC MAX. 150psi MIN. 55psi PILOT PRESSURE
LEAK	N/A
ELECTRICAL VOLTAGE	N/A
CURRENT	N/A

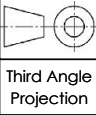
CUSTOMER PRINT

AIRman PART NUMBER CHART	
AIRman PART NUMBER	ANODIZATION COLOR
V381040523	NON-ANODIZED
V381040523-BLK	BLACK-ANODIZED
V381040523-CLR	CLEAR-ANODIZED

NOTE: PART MUST BE CLEAN AND BURR FREE  
MFG TOLERANCES UNLESS OTHERWISE NOTED:  
ALL UNITS ARE INCHES  
(2) DECIMAL PLACES: ±.01  
(3) DECIMAL PLACES: ±.005  
ANGLES: ±.5°  
BREAK ALL EDGES .005/.015 X 45°  
MACHINED SURFACES TO BE 63 RMS  
CRITICAL CHARACTERISTIC - CONTROL  
PLAN REQUIRED



CONFIDENTIAL: THIS DRAWING OR ANY PART THEREOF IS PROPRIETARY AND MAY NOT BE REPRODUCED OR COPIED WITHOUT WRITTEN CONSENT OF AIRMAN PRODUCTS



Third Angle Projection

DRAWN BY	NR	DESCRIPTION
DRAWN DATE	2019-11-13	VALVE, .38 NPT, 3-2, AP-SR
DRAWING SIZE	B	
MATERIAL	SEE NOTES	PART NUMBER
SCALE	1:1	V381040523
SHEET #	1 OF 1	