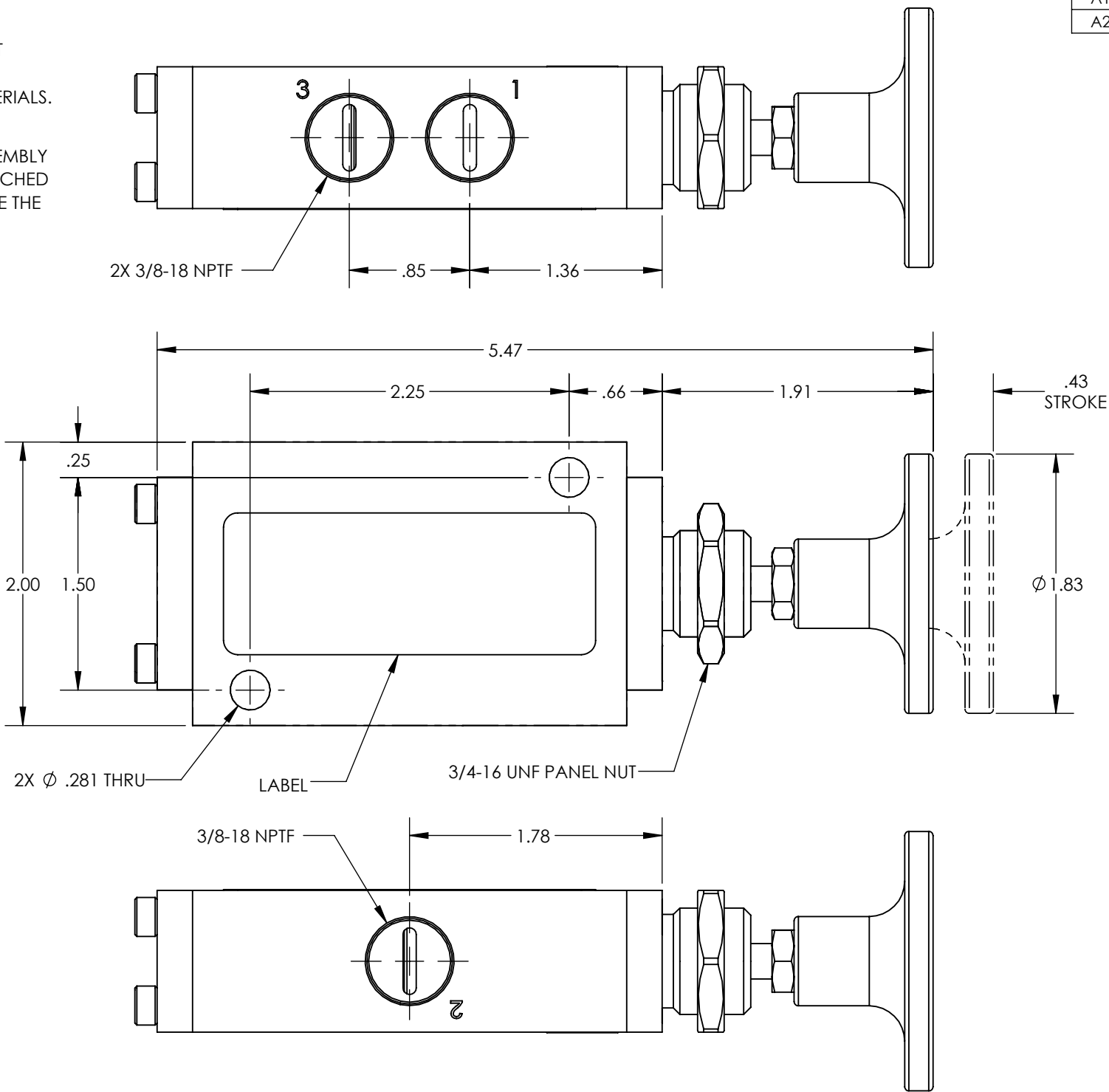
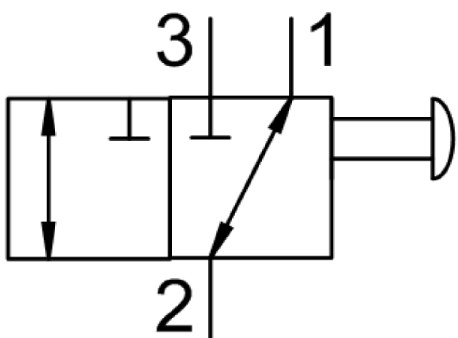


- NOTES:
1. APPLICABLE STANDARDS/SPECIFICATIONS:
ASME Y14.5M-1994, DIMENSIONING AND TOLERANCING
ASME Y14.38-1999, ABBREVIATIONS
 2. COMPONENT OR ITEM TO BE COMPLIANT WITH THE MOST
CURRENT REVISION OF THE RoHS / Wee DIRECTIVE FOR
THE REDUCTION OF HAZARDOUS SUBSTANCES AND MATERIALS.
 - 3.
 4. TABLE PRINT: USE CHART ASSOCIATED WITH AIRMAN ASSEMBLY
PART NUMBER. SUFFIXES (EXAMPLES -CLR AND -BLK) ATTACHED
TO THE END OF THE AIRMAN PART NUMBER WILL INDICATE THE
ANODIZATION COLOR (IF APPLICABLE)
 5. ITEM INDIVIDUALLY SEALED IN BAG

REV	DATE	EC #	DESCRIPTION	DRAWN	CKD
A	2021-09-07		ORIGINATED	NR	JMA
A1	2023-01-05		FIXED LABEL	NR	CED
A2	2025-01-17		CORRECTED DESCRIPTION	NAS	CED




FUNCTION	3/2 PUSH/PULL
MECHANICAL MATERIALS	ALUMINUM BODY & END CAP
SEALS	LOW TEMP. NITRILE, LOW COMP. SET POLYURETHANE
FASTENERS	STAINLESS STEEL
MTG STYLE	PANEL OR BODY SIDE
ASSY LUBRICATION	HEAVY TRANSPORT SILICONE
FLOW	2.2 Cv
TEMP	-40 TO 180°F
FILTRATION	40 MICRON
SYSTEM LUBRICATION REQ'D	N/A
PRESSURE RANGE	MIN: 0 psi MAX: 150 psi PILOT: N/A
LEAK	N/A
ELECTRICAL VOLTAGE	N/A
CURRENT	N/A

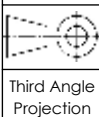


AIRman PART NUMBER CHART	
AIRman PART NUMBER	ANODIZATION COLOR
V381010021	NON-ANODIZED
V381010021-BLK	BLACK-ANODIZED
V381010021-CLR	CLEAR-ANODIZED

NOTE: PART MUST BE CLEAN AND BURR FREE
MFG TOLERANCES UNLESS OTHERWISE NOTED:
ALL UNITS ARE INCHES
(2) DECIMAL PLACES: ±.01
(3) DECIMAL PLACES: ±.005
ANGLES: ±.5°
BREAK ALL EDGES .005/.015 X 45°
MACHINED SURFACES TO BE 63 RMS
CRITICAL CHARACTERISTIC - CONTROL
PLAN REQUIRED



AIRman
PRODUCTS



Third Angle
Projection

CONFIDENTIAL: THIS DRAWING OR
ANY PART THEREOF IS PROPRIETARY
AND MAY NOT BE REPRODUCED OR
COPIED WITHOUT WRITTEN CONSENT
OF AIRMAN PRODUCTS

DRAWN BY	NR	DESCRIPTION
DRAWN DATE	2021-09-02	VALVE, .38 NPT, 3-2, PP-VC
DRAWING SIZE	B	
MATERIAL	SEE NOTES	PART NUMBER
SCALE	1:1	V381010021
SHEET #	1 OF 1	